

Surname	Centre Number	Candidate Number
First name(s)		0



**GCSE**

C660U30-1



**WEDNESDAY, 22 JUNE 2022 – MORNING**

**MUSIC – Component 3  
Appraising**

1 hour 15 minutes approximately

For Examiner's use only		
Question	Maximum Mark	Mark Awarded
1.	12	
2.	12	
3.	12	
4.	12	
5.	12	
6.	12	
7.	12	
8.	12	
<b>Total</b>	<b>96</b>	

**INSTRUCTIONS TO CANDIDATES**

Use black ink or black ball-point pen. Do not use gel pen or correction fluid.

Answers in music notation may be written in pencil or ink.

Write your name, centre number and candidate number in the spaces at the top of this page.

Answer **all** questions.

Write your answers in the spaces provided in this booklet. If you run out of space, use the additional page(s) at the back of the booklet, taking care to number the questions correctly.

**INFORMATION FOR CANDIDATES**

The appraising examination consists of **8** questions on the areas of study.

Full instructions are included on the CDs which will be played to you.

The maximum mark for this paper is **96**.

The allocation of marks is given at the end of each question or part-question.



JUN22C660U30101

Answer **all** questions.

**Area of Study 1: Musical Forms and Devices**

1. **Prepared Extract.** The following extract is taken from the *Badinerie*. A score is provided and the extract will be played **three** times with a **30 second** pause between each playing. There will be a **3 minute** silence after the final playing for you to complete your answers.

You now have **30 seconds** to read the questions and look at the score before the first playing of the extract.

You may wish to place a tick (✓) in the box each time you hear the extract. [12]




chord name

1

2

3

4

5

6

7

8

9

10

11

tr



12 (tr) 13 14 tr 15 16 tr

compositional device

17 18 19 20

21 22 23 24

C660U301  
03



- (a) The first ten notes of the melody, marked with a bracket, outline a chord. Give the name of this chord (for example, C major). [1]

**Chord name** .....

- (b) The extract begins on the second beat of the bar. Give the technical name for this. [1]

**Technical name** .....

- (c) State the name of the compositional device which occurs between bars 12<sup>2</sup> and 16<sup>1</sup> in the cello part. [1]

**Compositional device** .....

- (d) Identify the locations of **perfect cadences** heard in the extract in the following keys. Give **bar and beat numbers** (for example, bar 13<sup>2</sup> to 14<sup>1</sup>).

(i) **D major** ..... [1]

(ii) **B minor** ..... [1]

- (e) Give a **bar number** during the extract where one example of the following **musical features** occurs. [3]

**An appoggiatura** .....

**A crotchet rest** .....

**A chord of C major** .....

- (f) Describe the **musical features** of the **cello part** heard during the extract. [3]

**Cello part** .....

- (g) State the **full name** of the composer of this piece of music. [1]

.....



**BLANK PAGE**

**PLEASE DO NOT WRITE  
ON THIS PAGE**



**Area of Study 1: Musical Forms and Devices**

2. You will now hear **two** extracts from the same piece of orchestral music. Extract one will be played **three times**, and extract two will be played **twice** in the order shown below with a **30 second** pause between each playing. There will be a **2 minute** silence after the final playing for you to complete your answers.

You now have **30 seconds** to read the questions before the first playing of the extract.

You may wish to place a tick (✓) in the box each time you hear the extract.

[12]

Extract:      1                      1                      1                      2                      2

**Extract 1:**

There are **four sections** presented during this extract:

<p><b>Section 1:</b></p> <p><b>Solo Violin plays the introduction</b></p>	<p><b>Section 2:</b></p> <p><b>Flute plays the melody</b></p>	<p><b>Section 3:</b></p> <p><b>Violins play the melody</b></p>	<p><b>Section 4:</b></p> <p><b>Solo Violin plays a new melody</b></p>
---	---	--	---

- (a) During Section 1 the violin plays two notes at the same time. Underline the **interval** between the two notes. [1]

3<sup>rd</sup>                      5<sup>th</sup>                      6<sup>th</sup>                      7<sup>th</sup>

- (b) State the name of an **ornament** played by the flute during Section 2. [1]

**Ornament** .....

- (c) Tick (✓) the correct statement. [1]

		Tick (✓) one
The <b>melody</b> played by the violins during Section 3 is:	<b>the same as</b> the flute melody.	<input type="checkbox"/>
	<b>similar to</b> the flute melody.	<input type="checkbox"/>
	<b>different from</b> the flute melody.	<input type="checkbox"/>



(d) Describe the **new melody** played by the solo violin during Section 4. [2]

.....  
.....

(e) State the name of the **performance technique** used by the accompanying string instruments during Section 4. [1]

**Performance technique** .....

(f) Underline the **tonality** of the extract. [1]

**Major                      Minor                      Pentatonic**

(g) Underline the **time signature** of the extract. [1]

**2/4                      3/4                      4/4                      9/8**

**Extract 2:**

(h) Discuss the use of **texture** in this extract. Give **locations**, for example, at the beginning/ during the middle/at the end, to support your comments. [3]

.....  
.....  
.....

(i) Underline the **period** in which this piece was composed. [1]

**Baroque                      Classical                      Romantic**

C660U301  
07



**Area of Study 2: Music for Ensemble**

3. You will now hear an extract from the song *Buona Sera* performed by **Louis Prima**. It will be played **four** times with a **30 second** pause between each playing. There will be a **3 minute** silence after the final playing for you to complete your answers.

You now have **30 seconds** to read the questions.

You may wish to place a tick (✓) in the box each time you hear the extract.

[12]

There are **two sections** presented during the extract:

The end of Verse 1

All of Verse 2

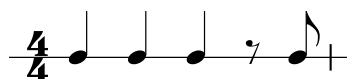
The words of the extract are as follows:

**Verse 1:** In the meantime let me tell you that I love you  
Buona sera, signorina kiss me goodnight  
Buona sera, signorina kiss me goodnight

**Verse 2:** Buona sera, signorina, buona sera  
It is time to say goodnight to Napoli  
Though it's hard for us to whisper, buona sera  
With that old moon above the Mediterranean sea  
In the morning signorina we'll go walking  
Where the mountains help the sun come into sight  
And by the little jewellery shop we'll stop and linger  
While I buy a wedding ring for your finger  
In the meantime let me tell you that I love you  
Buona sera, signorina kiss me goodnight

- (a) Tick (✓) the **rhythm** heard in the accompaniment during Verse 1.

[1]





- (b) At the end of Verse 1 the lead singer demonstrates an unaccompanied vocal improvisation. State the name of this **performance technique**. [1]

**Performance technique** .....

- (c) Tick (✓) the correct statement. [1]

		Tick (✓) one
The <b>tempo</b> of Verse 2 is:	<b>slower</b> than Verse 1	
	<b>the same</b> as Verse 1	
	<b>faster</b> than Verse 1	

- (d) Tick (✓) the correct statement. [1]

		Tick (✓) one
During Verse 2, the <b>pianist</b> :	<b>plays chords</b> throughout	
	<b>begins by playing chords</b> and <b>improvises to end</b>	
	<b>begins by improvising</b> and <b>plays chords to end</b>	

- (e) Describe **two** musical features of the **double bass** part heard during Verse 2. [2]

1. ....
2. ....

- (f) Describe **three** features of the music sung by the **backing singers** during Verse 2. [3]

1. ....
2. ....
3. ....

- (g) Underline the **cadence** heard at the **end** of Verse 2 on the word 'goodnight'. [1]

**Imperfect**                      **Interrupted**                      **Perfect**                      **Plagal**



- (h) Give the name of the **woodwind instrument** which performs a **solo break** at the end of the extract. [1]

**Woodwind instrument** .....

- (i) Give the name of the **percussion instrument** which performs throughout the extract. [1]

**Percussion instrument** .....



**BLANK PAGE**

**PLEASE DO NOT WRITE  
ON THIS PAGE**



### Area of Study 2: Music for Ensemble

4. You will hear an extract of music by **Robert Schumann**. It will be played **four** times with a **30 second** pause between each playing. There will be a **3 minute** silence after the final playing for you to complete your answers. The melody is printed below.

You now have **1 minute** to look at the melody and read the questions before the first playing of the extract.

You may wish to place a tick (✓) in the box each time you hear the extract.

[12]

--	--	--	--

Time  
signature

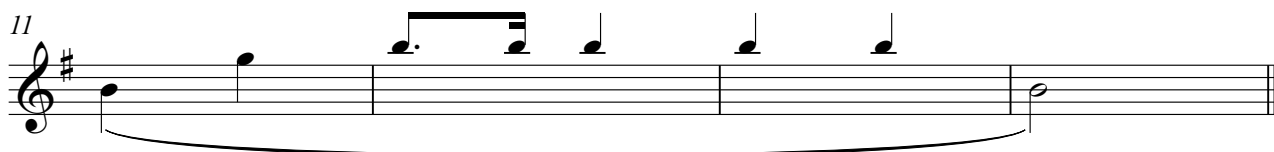
Tempo change



Chords



Pitch



(a) Complete the following questions **while listening carefully to the extract**.

(i) Underline the instrument on which this piece is played. [1]

**Harpichord                      Keyboard                      Organ                      Piano**

(ii) The **tempo** of the extract changes in bar 6. Underline the word which best describes this change. [1]

**Accelerando                      Moderato                      Ritardando                      Vivace**

(iii) The second and third lines of this piece are in G major. Identify the **chord** that accompanies each of the notes marked with an asterisk. Underline your choices in the table below. [2]

Bar 8	I	IV	V <sup>7</sup>
Bar 9	I	IV	V <sup>7</sup>

(iv) Complete the missing **itches** of the melody in **bars 12 and 13**. The rhythm is given for you. [5]

(b) You now have **3 minutes** to complete the following questions, **referring to the given score**.

(i) Insert the **time signature** in the correct place at the beginning of the music. [1]

(ii) The piece begins in the relative minor. Give the name of the **relative minor** of G major. [1]

**Key** .....

(iii) Underline the **shortest note value** found in this piece. [1]

**crotchet                      minim                      semibreve                      semiquaver**



**Area of Study 3: Film Music**

5. You will now hear an extract from the song ***Live and Let Die*** taken from the James Bond film of the same name. It will be played **three** times with a **30 second** pause between each playing. There will be a **3 minute** silence after the final playing for you to complete your answers.

You now have **30 seconds** to read the questions.

You may wish to place a tick (✓) in the box each time you hear the extract.

**[12]**

There are **three sections** presented during the extract:

**Verse****Chorus****Instrumental**

The words of the extract are as follows:

**Verse:**

Lead singer: When you were young and your heart was an open book,  
You used to say live and let live.

Backing vocals: You know you did, you know you did, you know you did.

Lead singer: But if this ever changing world in which we're living  
Makes you give in and cry,  
Say live and let die.

**Chorus:**

Backing vocals: Live and let die.

Lead singer: Live and let die.

Backing vocals: Live and let die.

- (a) Underline the **tempo** of the verse.

**[1]****Adagio****Allegro****Andante**

(b) In the table below, tick (✓) **three musical features** heard during the verse. [3]

Musical features	Tick (✓) <b>three</b>
Arpeggio	
Hammer on	
Imitation	
Legato	
Melisma	
On the beat	

(c) In the table below, tick (✓) **three musical features** heard during the chorus. [3]

Musical features	Tick (✓) <b>three</b>
Blue note	
Canon	
Rubato	
Sforzando	
Syncopation	
Walking Bass	



(d) In the table below, tick (✓) **three musical features** heard during the instrumental. [3]

Musical features	Tick (✓) <b>three</b>
Belt	
Driving rhythm	
Pedal	
Rubato	
Sample	
Stab chords	

(e) James Bond is a fictional spy, and a 'Bond film' is characterised by **romance, suspense, action and adventure**.

Discuss **two features** of the **music** (not the lyrics) that make it suitable for a James Bond film. Give locations, for example, in the verse/in the chorus/in the instrumental, to support your comments. [2]

1. ....
2. ....





**Area of Study 3: Film Music**

6. Listen to the following extract of music which is taken from the film *The Goonies*. It will be played **three** times with a **30 second** pause between each playing. There will be a **6 minute** silence after the final playing for you to complete your answers.

You now have **30 seconds** to read the questions.

You may wish to place a tick (✓) in the box each time you hear the extract.

[12]

- (a) Identify **one** tuned and **one** untuned percussion instrument heard on the extract. [2]

**Tuned percussion instrument** .....

**Untuned percussion instrument** .....

- (b) The extract accompanies a chase scene. Explain how the music portrays the **action and excitement of a chase scene**. You should use musical vocabulary in your answer. [10]

In your answer refer to:

- (i) musical elements
- (ii) how they are used to create the mood of action and excitement

Use this box for rough work





Examiner  
only

A large rectangular area containing 25 horizontal dotted lines for writing.



### Area of Study 4: Popular Music

7. **Prepared Extract.** Listen to the following extract from *Africa* performed by **Toto**. The extract will be played **three** times with a **30 second** pause between each playing. There will be a **3 minute** silence after the final playing for you to complete your answers.

You now have **30 seconds** to read the questions before the first playing of the extract.

You may wish to place a tick (✓) in the box each time you hear the extract.

[12]




There are **two sections** presented in the extract:

<b>Verse 2</b>
<b>26 bars</b>

<b>Chorus 2</b>
<b>18 bars</b>

During **Verse 2**:

- (a) Verse 2 contains a **riff**. Explain the meaning of this word.

[1]

**Riff** .....

.....

- (b) Describe **three** musical features of the **melody** heard in Verse 2.

[3]

1. ....

2. ....

3. ....

- (c) Describe how Verse 2 heard in the extract is **different** from Verse 1.

[3]

.....

.....



During **Chorus 2**:

- (d) The first three phrases of Chorus 2 are sung by different numbers of voices. Tick (✓) the correct order. [1]

		Tick (✓) <b>one</b>
The first three phrases of Chorus 2 are:	duet – solo – trio	
	solo – duet – trio	
	trio – duet – solo	
	solo – trio – duet	

- (e) Tick (✓) the correct statement. [1]

		Tick (✓) <b>one</b>
During the Chorus, the <b>harmonic rhythm</b> is mostly:	<b>one chord every two bars</b>	
	<b>one chord each bar</b>	
	<b>two chords each bar</b>	

During the **extract as a whole**:

- (f) In the table below, tick (✓) **two musical features** heard during the extract. [2]

Musical features	Tick (✓) <b>two</b>
Distortion	
Fill	
Leitmotif	
Ostinato	
Tremolo	

- (g) Underline the **year** in which this song was released. [1]

**1980**

**1982**

**1984**

**1986**



### Area of Study 4: Popular Music

8. Finally, you will hear an extract from the song *This Will Be (An Everlasting Love)* by **Natalie Cole**. It will be played **four** times with a **30 second** pause between each playing. There will be a **3 minute** silence after the final playing for you to complete your answers.

You now have **1 minute** to read the questions.

You may wish to place a tick (✓) in the box each time you hear the extract.

[12]





There are **three sections** presented during the extract:

<b>Introduction</b>
<b>16 bars</b>

<b>Verse 1</b>
<b>8 bars</b>

<b>Verse 2</b>
<b>8 bars</b>

The words of the extract are as follows:

**Verse 1:** This will be an everlasting love,  
This will be the one I've waited for,  
This will be the first time anyone has loved me.

**Verse 2:** I'm so glad he found me in time,  
I'm so glad that he rectified my mind,  
This will be an everlasting love for me.

During the **Introduction**:

- (a) Underline the **beats of the bar** on which **hand claps** are heard. [1]

**1 and 3**

**2 and 3**

**2 and 4**

**3 and 4**

- (b) Underline the **tonality** of the extract. [1]

**Major**

**Minor**

**Pentatonic**

- (c) Underline the type of **rhythm** used. [1]

**Chaal**

**Driving**

**Rock**

**Swing**



(d) Describe **three musical features** of the piano part. [3]

1. ....
2. ....
3. ....

During **Verse 1**:

(e) State the words of the verse which are sung **in harmony**. [1]

.....

(f) Tick (✓) the **chord pattern** used during both the first and second lines of Verse 1. [1]

Chord Pattern	Tick (✓) <b>one</b>
B <sub>♭</sub> – G <sub>m</sub> – E <sub>♭</sub> – F	
B <sub>♭</sub> – G <sub>m</sub> – C <sub>m</sub> – F	
B <sub>♭</sub> – E <sub>♭</sub> – C <sub>m</sub> – F	

During **Verse 2**

(g) Describe the music played by the **trumpets** during Verse 2. [3]

.....

.....

.....

(h) **One** of the following statements about the end of the extract is true. Tick (✓) the statement that you believe to be **true**. [1]

Statement	Tick (✓) for true
The key changes to a higher pitch	
The harmony becomes chromatic	
The tempo gets faster	
The pitch of the melody becomes lower	

**END OF PAPER**









**GCSE**

**C660U30-1D**



**WEDNESDAY, 22 JUNE 2022 – MORNING**

**MUSIC – Component 3**  
**Appraising**

**THIS ENVELOPE CONTAINS CDs FOR THE ABOVE EXAMINATION**

**TO BE OPENED ON THE DAY OF THE EXAMINATION**

**ENSURE EQUIPMENT IS TESTED IN ADVANCE OF THE EXAMINATION USING A  
STANDARD NON-CONFIDENTIAL CD**

1. There should be **two** CDs in the envelope.
2. Details of any discrepancy should be forwarded to [despatchqueries@wjec.co.uk](mailto:despatchqueries@wjec.co.uk).
3. If you experience difficulties in playing the CDs then seek assistance from the technical support within your centre.
4. If your technical support cannot resolve the issue, then you can download the mp3 files from WJEC's secure website.
5. The primary account holder (the Exams Officer) can access the files in 'TODAY'S QUESTION PAPERS' under 'RESOURCES' on WJEC's secure website.
6. A password will be required to access the files and this can be obtained by contacting 029 2026 5154.

### **APPRAISING EXAMINATION**

Both CDs will be required for the examination.

### **INSTRUCTIONS TO INVIGILATORS**

**Please note that all extracts are repeated on the CDs and pauses are timed, so there is no need to pause the CD once the exam has begun. At the end of CD 1, after the announcement on the CD, you must remove the CD and place CD 2 into the machine and press play. An announcement on CD 2 states when the examination is completed.**