

Please check the examination details below before entering your candidate information

Candidate surname

Other names

Centre Number

Candidate Number

--	--	--	--	--

--	--	--	--	--

Pearson Edexcel Level 3 GCE

Time 2 hours 30 minutes

Paper
reference

9PE0/01

Physical Education

Advanced

COMPONENT 1: Scientific Principles of Physical Education

You must have:

Calculator and ruler

Total Marks

Instructions

- Use **black** ink or ball-point pen.
- **Fill in the boxes** at the top of this page with your name, centre number and candidate number.
- Answer **all** questions.
- Answer the questions in the spaces provided
– *there may be more space than you need.*

Information

- The total mark for this paper is 140.
- The marks for **each** question are shown in brackets
– *use this as a guide as to how much time to spend on each question.*
- The question marked with an **asterisk** (*) requires candidates to use their knowledge and understanding from across the course of study in their answer.

Advice

- Read each question carefully before you start to answer it.
- Try to answer every question.
- Check your answers if you have time at the end.

Turn over ►

P71567A

©2022 Pearson Education Ltd.

Q:1/1/1/1



Pearson

SECTION A – Applied anatomy and physiology

Answer ALL questions. Write your answers in the spaces provided.

1 Define the following:

(i) stroke volume

(1)

.....

.....

(ii) cardiac output

(1)

.....

.....

(Total for Question 1 = 2 marks)

2 Explain how venous return affects stroke volume and cardiac output.

(4)

.....

.....

.....

.....

.....

.....

.....

.....

.....

.....

.....

.....

.....

.....

.....

.....

.....

.....

(Total for Question 2 = 4 marks)

DO NOT WRITE IN THIS AREA

DO NOT WRITE IN THIS AREA

DO NOT WRITE IN THIS AREA



DO NOT WRITE IN THIS AREA

DO NOT WRITE IN THIS AREA

DO NOT WRITE IN THIS AREA

3 Summarise why an endurance athlete might have bradycardia.

(4)

.....

.....

.....

.....

.....

.....

.....

.....

.....

.....

.....

.....

.....

.....

.....

.....

.....

.....

.....

.....

.....

.....

.....

(Total for Question 3 = 4 marks)

4 Identify **three** movements possible at the ankle joint.

(i)

(1)

.....

(ii)

(1)

.....

(iii)

(1)

.....

(Total for Question 4 = 3 marks)

.....



5 Summarise, using **one** sporting example for each, the following types of muscle contraction: concentric, eccentric and isometric.

Type of muscle contraction	Summary of the muscle contraction	Sporting example
<p>Concentric</p>	<p>.....</p> <p>.....</p> <p>.....</p> <p>.....</p> <p>.....</p> <p>.....</p> <p>(1)</p>	<p>.....</p> <p>.....</p> <p>.....</p> <p>.....</p> <p>.....</p> <p>.....</p> <p>(1)</p>
<p>Eccentric</p>	<p>.....</p> <p>.....</p> <p>.....</p> <p>.....</p> <p>.....</p> <p>.....</p> <p>(1)</p>	<p>.....</p> <p>.....</p> <p>.....</p> <p>.....</p> <p>.....</p> <p>.....</p> <p>(1)</p>
<p>Isometric</p>	<p>.....</p> <p>.....</p> <p>.....</p> <p>.....</p> <p>.....</p> <p>.....</p> <p>(1)</p>	<p>.....</p> <p>.....</p> <p>.....</p> <p>.....</p> <p>.....</p> <p>.....</p> <p>(1)</p>

(Total for Question 5 = 6 marks)

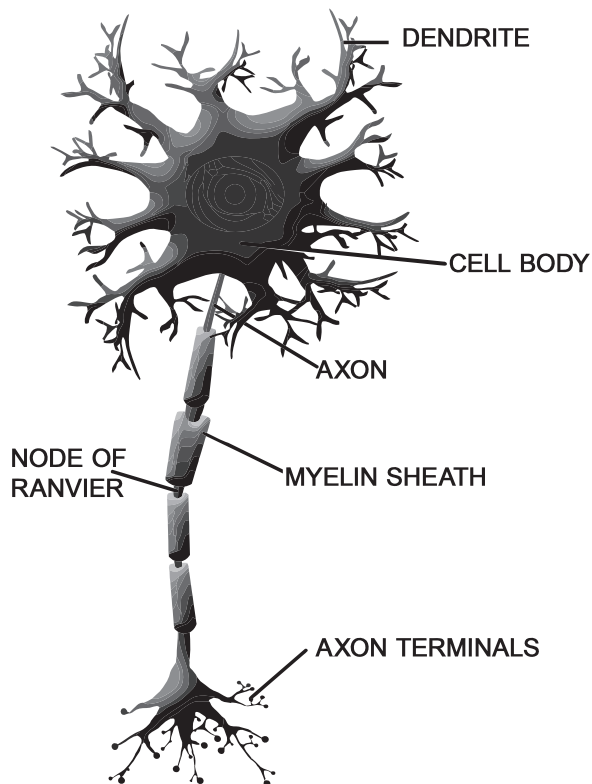
DO NOT WRITE IN THIS AREA

DO NOT WRITE IN THIS AREA

DO NOT WRITE IN THIS AREA



6 Summarise the function of any **four** of the labelled parts of a motor neurone.



(Source: © ducu59us/Shutterstock)

(4)

.....

.....

.....

.....

.....

.....

.....

.....

.....

.....

.....

.....

.....

.....

.....

.....

.....

.....

.....

.....

.....

.....

(Total for Question 6 = 4 marks)



7 Outline **four** possible healthy lifestyle changes to reduce the risk of cardiovascular diseases.

(4)

.....

.....

.....

.....

.....

.....

.....

.....

.....

.....

.....

.....

.....

.....

.....

.....

.....

.....

.....

.....

.....

.....

.....

(Total for Question 7 = 4 marks)

DO NOT WRITE IN THIS AREA

DO NOT WRITE IN THIS AREA

DO NOT WRITE IN THIS AREA



DO NOT WRITE IN THIS AREA

DO NOT WRITE IN THIS AREA

DO NOT WRITE IN THIS AREA

8 Following the resting stage, describe the remaining **four** stages of muscle contraction. (4)

Handwriting practice area consisting of 18 horizontal dotted lines for writing the answer to Question 8.

(Total for Question 8 = 4 marks)



9 Following a period of strength training, an athlete may have more powerful muscular contractions.

Examine the structural adaptations that would enable this to occur.

(8)

Area with horizontal dotted lines for writing the answer.

(Total for Question 9 = 8 marks)

DO NOT WRITE IN THIS AREA

DO NOT WRITE IN THIS AREA

DO NOT WRITE IN THIS AREA



DO NOT WRITE IN THIS AREA

DO NOT WRITE IN THIS AREA

DO NOT WRITE IN THIS AREA

10 Examine the physiological processes occurring in the fast component of recovery.

(8)

Area with horizontal dotted lines for writing the answer to Question 10.

(Total for Question 10 = 8 marks)



11 Examine the strategies a coach can use before, during and after a competition to enhance recovery processes.

(8)

Area with horizontal dotted lines for writing the answer to Question 11.

(Total for Question 11 = 8 marks)

DO NOT WRITE IN THIS AREA

DO NOT WRITE IN THIS AREA

DO NOT WRITE IN THIS AREA



DO NOT WRITE IN THIS AREA

DO NOT WRITE IN THIS AREA

DO NOT WRITE IN THIS AREA

12 Discuss how the cardiovascular and respiratory systems function both individually and in conjunction with each other.

(15)

Area with horizontal dotted lines for writing.



P 7 1 5 6 7 A 0 1 1 2 8

DO NOT WRITE IN THIS AREA

DO NOT WRITE IN THIS AREA

DO NOT WRITE IN THIS AREA

Handwriting practice area with 20 horizontal dotted lines.



DO NOT WRITE IN THIS AREA

DO NOT WRITE IN THIS AREA

DO NOT WRITE IN THIS AREA

(Total for Question 12 = 15 marks)

TOTAL FOR SECTION A = 70 MARKS



P 7 1 5 6 7 A 0 1 3 2 8

SECTION B – Exercise physiology and applied movement analysis

Answer ALL questions. Write your answers in the spaces provided.

13 Define the following:

(i) speed

(1)

.....
.....

(ii) velocity

(1)

.....
.....

(iii) acceleration

(1)

.....
.....

(Total for Question 13 = 3 marks)

.....

DO NOT WRITE IN THIS AREA

DO NOT WRITE IN THIS AREA

DO NOT WRITE IN THIS AREA



DO NOT WRITE IN THIS AREA

DO NOT WRITE IN THIS AREA

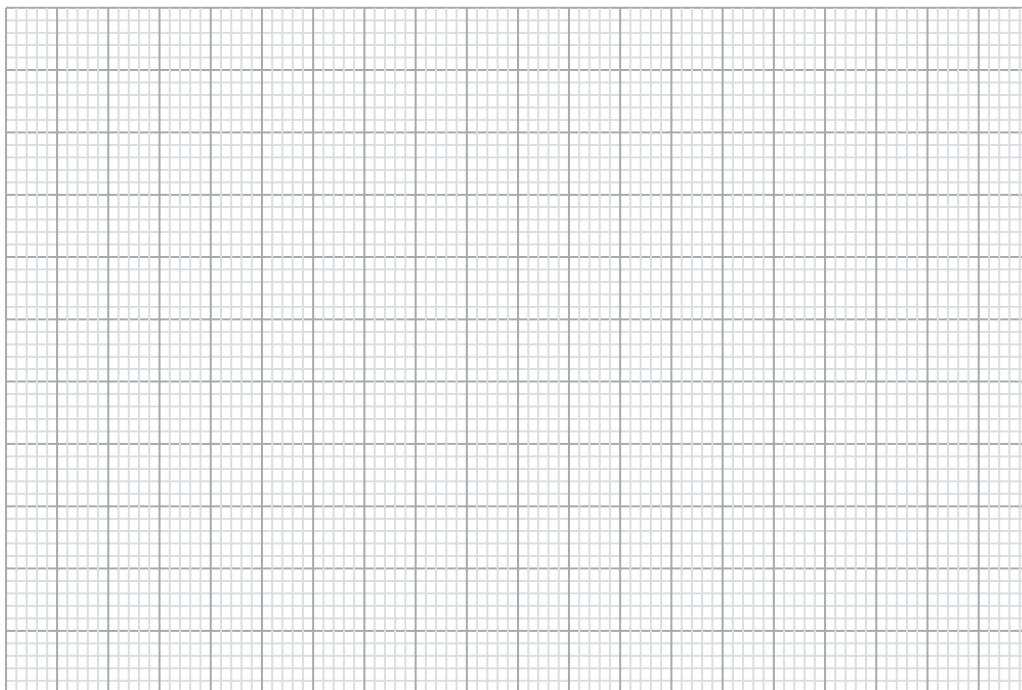
DO NOT WRITE IN THIS AREA

14 The table shows the split times for an 800 m race.

Distance travelled (metres)	Time (seconds)
100	13
200	28
300	43
400	57
500	70
600	84
700	99
800	110

(a) Plot a graph of distance against time for this data set.

(3)



(b) Calculate the speed of the athlete at 600 m and 800 m.

Speed at 600 m	(1)
Speed at 800 m	(1)

(c) Calculate the average acceleration between 600 m and 800 m.

(3)

.....

.....

.....

.....

.....

.....

.....

.....

.....

.....

(Total for Question 14 = 8 marks)



15 Outline **five** strategies that can be used to prevent sporting injuries.

(5)

DO NOT WRITE IN THIS AREA

DO NOT WRITE IN THIS AREA

DO NOT WRITE IN THIS AREA

Area with horizontal dotted lines for writing the answer to Question 15.

(Total for Question 15 = 5 marks)



16 Outline the **five** stages of POLICE in the rehabilitation of injuries.

(5)

.....

.....

.....

.....

.....

.....

.....

.....

.....

.....

.....

.....

.....

.....

.....

.....

.....

.....

.....

.....

.....

.....

.....

(Total for Question 16 = 5 marks)

DO NOT WRITE IN THIS AREA

DO NOT WRITE IN THIS AREA

DO NOT WRITE IN THIS AREA



DO NOT WRITE IN THIS AREA

DO NOT WRITE IN THIS AREA

DO NOT WRITE IN THIS AREA

19 Using examples, summarise the **two** main classifications of common sporting injuries and their causes.

Classification of common sporting injuries	Cause	Example
..... (1) (1) (1)
..... (1) (1) (1)

(Total for Question 19 = 6 marks)



P 7 1 5 6 7 A 0 2 1 2 8

20 Examine different fitness tests used to measure aerobic power.

(8)

Area with horizontal dotted lines for writing the answer to Question 20.

(Total for Question 20 = 8 marks)

DO NOT WRITE IN THIS AREA

DO NOT WRITE IN THIS AREA

DO NOT WRITE IN THIS AREA



DO NOT WRITE IN THIS AREA

DO NOT WRITE IN THIS AREA

DO NOT WRITE IN THIS AREA

21 Using examples, examine how dietary supplements can be used to enhance sporting performance.

(8)

Area with horizontal dotted lines for writing the answer to Question 21.

(Total for Question 21 = 8 marks)



DO NOT WRITE IN THIS AREA

DO NOT WRITE IN THIS AREA

DO NOT WRITE IN THIS AREA

Handwriting practice area with 25 horizontal dotted lines.



P 7 1 5 6 7 A 0 2 5 2 8

DO NOT WRITE IN THIS AREA

DO NOT WRITE IN THIS AREA

DO NOT WRITE IN THIS AREA

(Total for Question 22 = 15 marks)

TOTAL FOR SECTION B = 70 MARKS
TOTAL FOR PAPER = 140 MARKS



DO NOT WRITE IN THIS AREA

DO NOT WRITE IN THIS AREA

DO NOT WRITE IN THIS AREA

BLANK PAGE



P 7 1 5 6 7 A 0 2 7 2 8

DO NOT WRITE IN THIS AREA

DO NOT WRITE IN THIS AREA

DO NOT WRITE IN THIS AREA

BLANK PAGE

