

Please write clearly in block capitals.

Centre number

|  |  |  |  |  |
|--|--|--|--|--|
|  |  |  |  |  |
|--|--|--|--|--|

Candidate number

|  |  |  |  |
|--|--|--|--|
|  |  |  |  |
|--|--|--|--|

Surname

---

Forename(s)

---

Candidate signature

---

## GCSE SPANISH

# F

Foundation Tier    Unit 1    Listening

Friday 20 May 2016

Morning

Time allowed: 30 minutes approximately  
+ 5 minutes reading time before the test

### Materials

You will need no other materials

- **The pauses are pre-recorded for this test.**

### Instructions

- Use black ink or black ball-point pen.
- Fill in the boxes at the top of this page.
- **Do not open this book until you are told to do so.**

This is what you should do for each item.

- After the question number is announced, there will be a pause to allow you to read the instructions and questions.
- Listen carefully to the recording and read the questions again.
- Listen to the recording again and then answer the questions.
- When the next question is about to start you will hear a bleep like this (\*).
- You may write at any time during the test.
- Answer **all** questions in **English**.
- You must answer the questions in the spaces provided. Do not write outside the box around each page or on blank pages.
- Write neatly and put down **all** the information you are asked to give.
- Ask any questions now. **You must not ask questions or interrupt during the test.**
- You now have five minutes to read through the question paper. You may make notes during this time. You may open your answer book now.
- **The test starts now.**

### Information

- The marks for questions are shown in brackets.
- The maximum mark for this paper is 35.
- You must **not** use a dictionary during this test.



Answer **all** questions in **English** in the spaces provided.

**1 Gill meets a family from Calatayud**



What is the family asking Gill about?

Write the correct letter in each box.

**1 (a)**

|          |            |
|----------|------------|
| <b>A</b> | Her age    |
| <b>B</b> | Her name   |
| <b>C</b> | Her family |

**[1 mark]**

**1 (b)**

|          |               |
|----------|---------------|
| <b>A</b> | Her pets      |
| <b>B</b> | Her home town |
| <b>C</b> | Her birthday  |

**[1 mark]**

**1 (c)**

|          |                     |
|----------|---------------------|
| <b>A</b> | Her phone number    |
| <b>B</b> | Her school subjects |
| <b>C</b> | Her nationality     |

**[1 mark]**

|   |
|---|
| 3 |
|---|



**2 Free time**

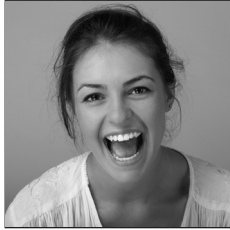
What are these people planning to do?

**Example**

**Go to the library.**

\_\_\_\_\_

**2 (a)**



**Sandra**

\_\_\_\_\_

**[1 mark]**

**2 (b)**

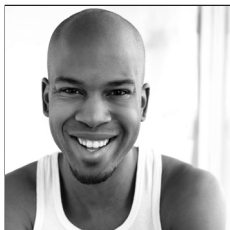


**José Luis**

\_\_\_\_\_

**[1 mark]**

**2 (c)**



**Rafael**

\_\_\_\_\_

**[1 mark]**

|          |
|----------|
|          |
| <b>3</b> |

**Turn over ►**



**3 Ana gets advice in her new job in Salamanca**



Who should Ana speak to in each situation?

Write the correct letter in each box.

|          |         |
|----------|---------|
| <b>A</b> | Andrés  |
| <b>B</b> | Beatriz |
| <b>C</b> | Carlos  |
| <b>D</b> | Daniela |
| <b>E</b> | Eduardo |

**3 (i)** If she needs first aid at work.

[1 mark]

**3 (ii)** If she has a query about her wages.

[1 mark]

**3 (iii)** If she wants to send out for something to eat.

[1 mark]



**4 First date**

How do these people feel about their first date?

Write    **P**        (Positive)  
          **N**        (Negative)  
          **P + N**    (Positive + Negative)

**4 (a)****[1 mark]****4 (b)****[1 mark]****4 (c)****[1 mark]****4 (d)****[1 mark]**

|   |
|---|
|   |
| 4 |

**Turn over ►**

**5 Lucas talks about his home town in Murcia**

Where are the places he mentions?

Write the correct letter in each box.

|          |                  |
|----------|------------------|
| <b>A</b> | behind           |
| <b>B</b> | in front of      |
| <b>C</b> | in the middle of |
| <b>D</b> | a long way from  |
| <b>E</b> | to the left of   |
| <b>F</b> | to the right of  |

**5 (a)** The cinema is  the shopping centre. **[1 mark]**

**5 (b)** The river is  the park. **[1 mark]**

**5 (c)** The swimming pool is  the leisure centre. **[1 mark]**

**5 (d)** The café is  the museum. **[1 mark]**



**6 Special events**

What are these people celebrating?

Write the correct letter in each box.

**A****B****C****D****E****F**

6 (a)

[1 mark]

6 (b)

[1 mark]

6 (c)

[1 mark]

6 (d)

[1 mark]

|   |
|---|
|   |
| 4 |

Turn over ►



## 7 Cookery programmes on Canal Vasco TV



What is the **most** appropriate title for each TV programme described?

Write the correct letter in each box.

7 (a)

|          |                     |
|----------|---------------------|
| <b>A</b> | Delightful desserts |
| <b>B</b> | Make more of fish   |
| <b>C</b> | Meat treats         |

[1 mark]

7 (b)

|          |                      |
|----------|----------------------|
| <b>A</b> | Summer salads        |
| <b>B</b> | Vegetarian dishes    |
| <b>C</b> | Healthy ways to cook |

[1 mark]

7 (c)

|          |                               |
|----------|-------------------------------|
| <b>A</b> | Healthy drinks for kids       |
| <b>B</b> | Making fruit puddings         |
| <b>C</b> | Party cocktails for grown-ups |

[1 mark]

|   |
|---|
| 3 |
|---|





**8 Taking goods back to the shop**

Why are these people taking things back to the shop?

Write the correct letter in each box.

**8 (a)** The problem with the trousers:

|          |                      |
|----------|----------------------|
| <b>A</b> | too short.           |
| <b>B</b> | have a mark on them. |
| <b>C</b> | does not like them.  |

[1 mark]

**8 (b)** The problem with the boots:

|          |                      |
|----------|----------------------|
| <b>A</b> | wrong size.          |
| <b>B</b> | have a hole in them. |
| <b>C</b> | broken zip.          |

[1 mark]

**8 (c)** The problem with the jeans:

|          |               |
|----------|---------------|
| <b>A</b> | too tight.    |
| <b>B</b> | faulty.       |
| <b>C</b> | wrong colour. |

[1 mark]

Turn over ►

|   |
|---|
| 3 |
|---|



**9**      **Reviews for a hotel in Mijas**



Which **disadvantage** and **advantage** does each person mention?

Write the correct letter in each box.

|          |                |
|----------|----------------|
| <b>A</b> | Cleanliness    |
| <b>B</b> | Night club     |
| <b>C</b> | Grounds        |
| <b>D</b> | Hotel location |
| <b>E</b> | Food           |
| <b>F</b> | Staff          |

**9 (a)**

**Disadvantage**

**Advantage**

**[2 marks]**

**9 (b)**

**Disadvantage**

**Advantage**

**[2 marks]**

|   |
|---|
| 4 |
|---|



**10 Favourite subjects**

Which subject does each person prefer? Answer in **English**.

**10 (a)**

\_\_\_\_\_

**[1 mark]****10 (b)**

\_\_\_\_\_

**[1 mark]****10 (c)**

\_\_\_\_\_

**[1 mark]****10 (d)**

\_\_\_\_\_

**[1 mark]**

|          |
|----------|
|          |
| <b>4</b> |

**END OF QUESTIONS**

**There are no questions printed on this page**

**DO NOT WRITE ON THIS PAGE  
ANSWER IN THE SPACES PROVIDED**

**Copyright information**

For confidentiality purposes, from the November 2015 examination series, acknowledgements of third party copyright material will be published in a separate booklet rather than including them on the examination paper or support materials. This booklet is published after each examination series and is available for free download from [www.aqa.org.uk](http://www.aqa.org.uk) after the live examination series.

Permission to reproduce all copyright material has been applied for. In some cases, efforts to contact copyright-holders may have been unsuccessful and AQA will be happy to rectify any omissions of acknowledgements. If you have any queries please contact the Copyright Team, AQA, Stag Hill House, Guildford, GU2 7XJ.

Copyright © 2016 AQA and its licensors. All rights reserved.

