

Surname	Centre Number	Candidate Number
First name(s)		0



GCSE

C111U10-1



WEDNESDAY, 11 NOVEMBER 2020 – MORNING

GEOGRAPHY A – Component 1

Changing Physical and Human Landscapes

1 hour 30 minutes

For Examiner's use only		
Question	Maximum Mark	Mark Awarded
1	34	
2	34	
SPaG	4	
either 3	16	
or 4	16	
Total	88	

ADDITIONAL MATERIALS

In addition to this paper you may use a calculator and a ruler if required.

INSTRUCTIONS TO CANDIDATES

Answer **both** questions in Section A.

Answer **one** question from Section B.

Use black ink or black ball-point pen. Do not use pencil or gel pen. Do not use correction fluid.

Write your name, centre number and candidate number in the spaces at the top of this page.

Write your answers in the spaces provided in this booklet.

Additional space is provided for some questions within the booklet (if required). If further space is required for any question, you should use the lined page(s) at the end of this booklet. The question number(s) should be clearly shown.

INFORMATION FOR CANDIDATES

The number of marks is given in brackets [] at the end of each question.

Your ability to spell, punctuate and use grammar and specialist terms accurately will be assessed in your answer to question 2(e).



OCT20C111U10101

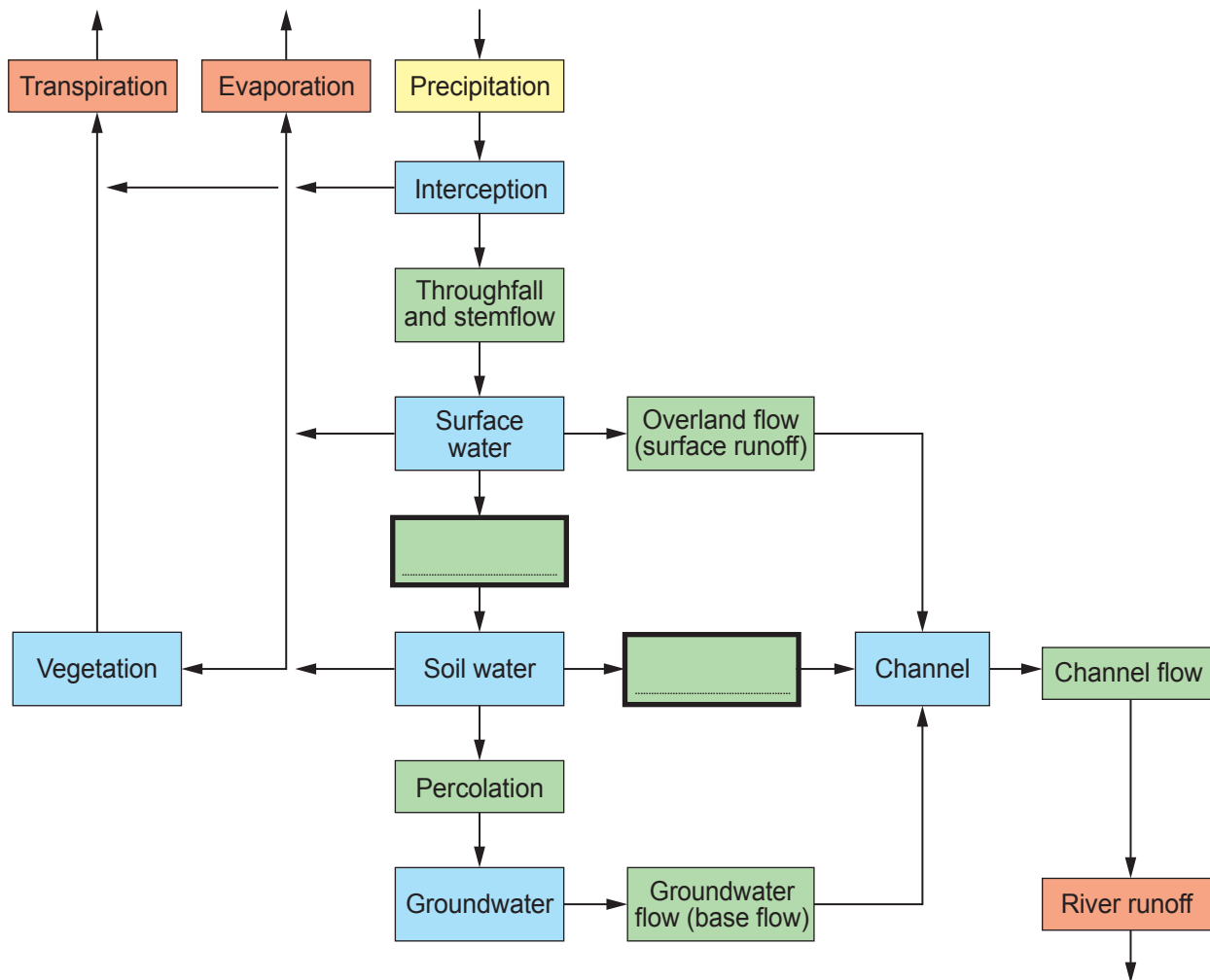
SECTION A: CORE THEMES

Answer all of the questions in this section.

CORE THEME 1: Landscapes and Physical Processes

1. (a) Study **Diagram 1.1** below.

Diagram 1.1 – Flows and stores of water in UK drainage basins



(i) Name **one** store of water shown on the diagram. [1]

.....

(ii) Complete the diagram opposite by inserting the **two** correct processes from the list below. [2]

Infiltration

Condensation

Throughflow

(iii) Explain the inter-relationship between interception and overland flow. [4]

.....

.....

.....

.....

.....

.....

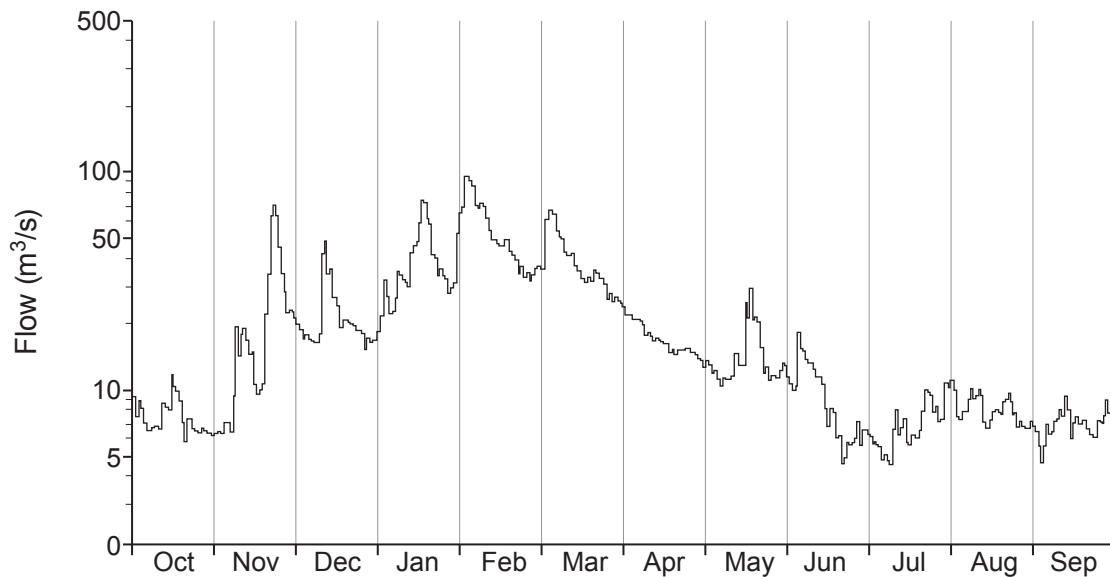
.....

C111U101
03



(b) Study **Graph 1.2** below.

Graph 1.2 – The annual discharge of the River Thames at Reading 2016 – 2017



(i) Complete the sentence below.

A line graph that shows the discharge of a river over time is known as a

.....

[1]

(ii) Use information from **Graph 1.2** to circle the correct answer in the sentences below. [3]

Between March and September the discharge **increased / fluctuated / stayed the same.**

The peak discharge was in **November / February / May.**

The annual discharge range was **75 / 85 / 95** m³/second.



(iii) Describe **two** ways in which weather increases discharge in UK rivers. [4]

.....

.....

.....

.....

.....

.....

.....

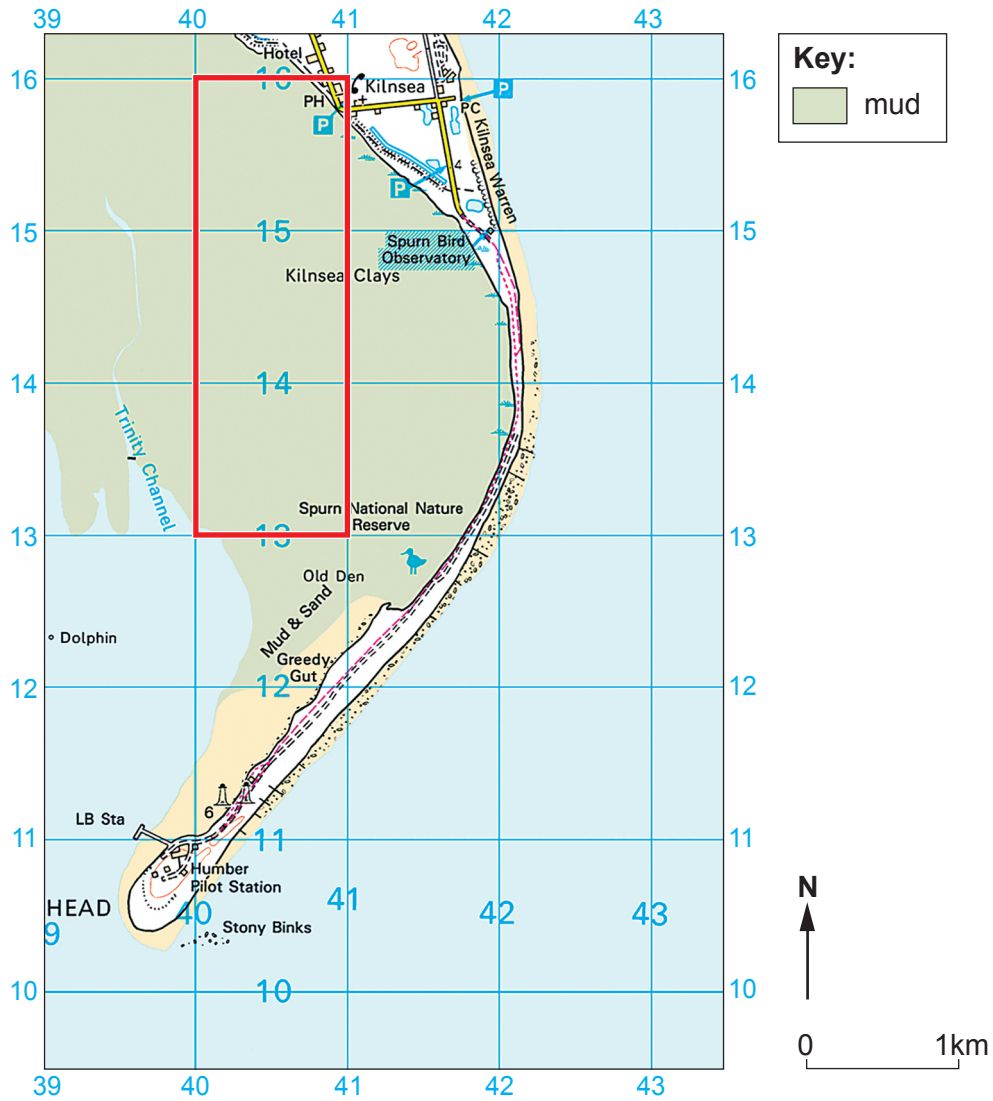
.....

C111U101
05



- (c) Study the **OS Map** below. It shows Spurn Head spit on the east coast of England. (A key for the map is on page 36).

OS Map 1.3 – Spurn Head



- (i) Estimate the area of mud in the squares outlined in red. [1]

..... km²



(d) Study the information in the **Resource Box** below.

Resource Box – Information about the Isle of Skye



Skye is the largest island in the Inner Hebrides. The island is linked to the mainland by a road bridge. Skye has some of the most dramatic scenery in the country.

A large number of tourists at Fairy Pools in Skye



Fact File – Tourism

- Skye has recently seen a large increase in tourist numbers. More than 24 000 people visited the tourist centre in Portree in 2017.
- Cruise ships dock in Portree Bay each summer.
- Islanders have complained that their narrow, single-track roads are being blocked with camper vans, tour buses and cars.
- Some people think that there should be a long-term tourism plan to tackle the issue.
- Some people think that tourists should pay a tax to the island.



Additional space for question 1(d) only:

.....

.....

.....

.....

.....

.....

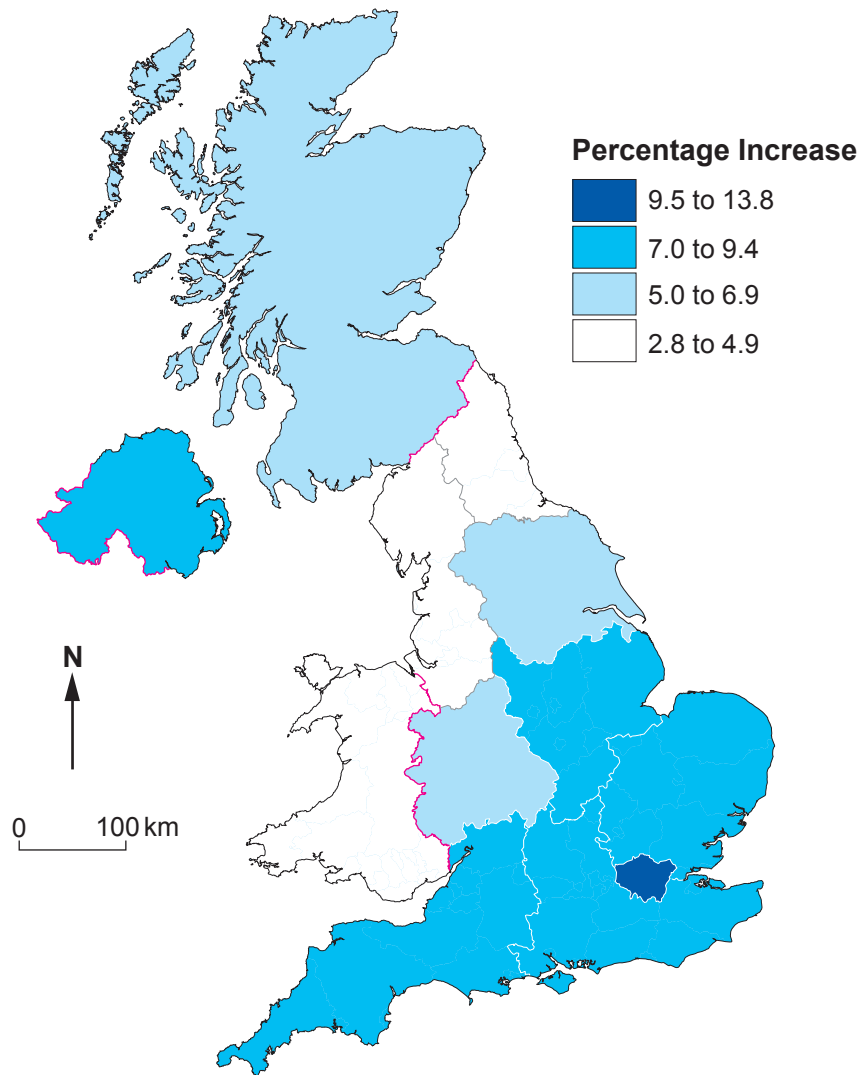
End of Question 1



CORE THEME 2: Rural-Urban Links

2. (a) Study **Map 2.1** below.

Map 2.1 – Population increase in the regions of the UK



(i) Name the mapping technique shown above.

[1]

.....

.....



(ii) Describe how the map could be improved so that it is easier to interpret. [2]

.....

.....

.....

.....

(iii) Give **one** reason why the population of the UK is increasing. [2]

.....

.....

.....

(iv) The UK Government wants to see an extra 240 000 new homes built each year.
Explain why this creates challenges for greenfield sites. [4]

.....

.....

.....

.....

.....

.....

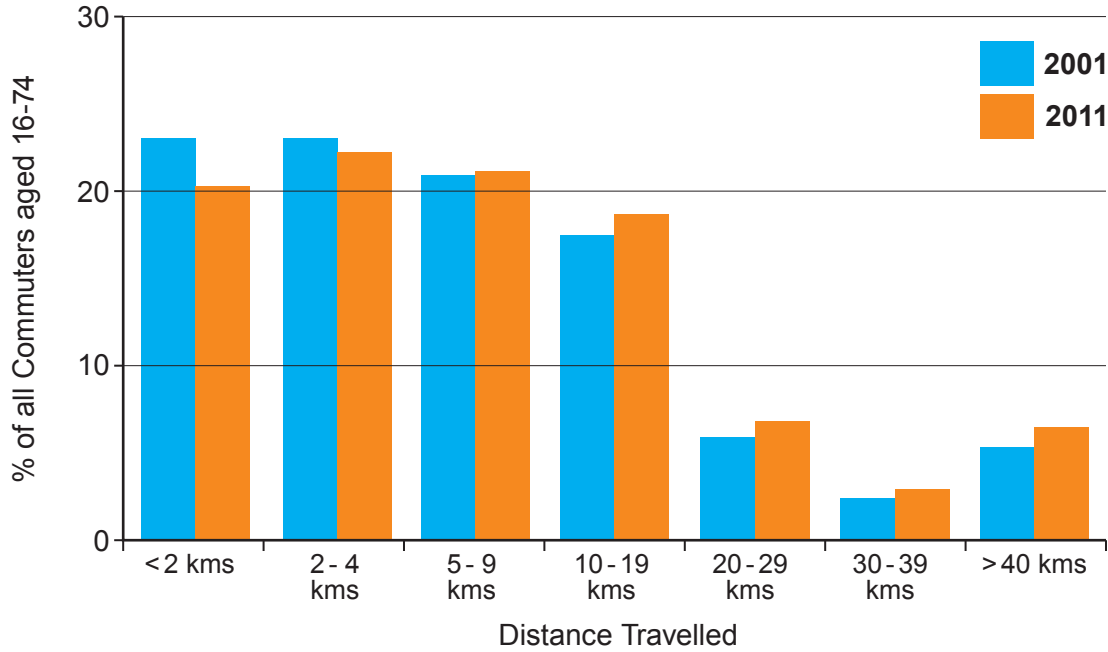
.....

.....



(b) Study **Graph 2.2** below.

Graph 2.2 – Commuting distances in the UK



(i) Give the modal class for the distance travelled by commuters in 2011. [1]

.....

.....

(ii) Describe the relationship between the percentage (%) of all commuters and distance travelled. [2]

.....

.....

.....

.....

(iii) Suggest one conclusion about commuting time that you could draw from this data. [2]

.....

.....

.....

.....



(c) Counter-urbanisation is a process which has resulted in an increase in daily commuting.

(i) What is counter-urbanisation? Tick (✓) **one** definition below. [1]

Definition	Tick (✓)
The movement of people from rural areas to urban areas.	
The movement of people from home to work.	
The movement of people from large cities to smaller towns and rural areas.	

(ii) Give **three** transport issues that arise from counter-urbanisation. [3]

1.

.....

2.

.....

3.

.....



(d) (i) Describe **one** social and **one** cultural pattern within a HIC global city you have studied. [4]

Name of HIC global city

.....
.....
.....
.....
.....
.....
.....
.....
.....
.....

(ii) Explain why reducing poverty is a challenge in HIC cities. [4]

.....
.....
.....
.....
.....
.....
.....
.....
.....
.....

C111U101
15



(e) Study the information in the **Resource Box** below.

Resource Box – Shopping in Chester

Chester has introduced some strategies to improve its high street in response to competition from out of town retailing and internet shopping. Three strategies are shown in the photographs below:

Park and Ride



Pedestrianised Street in the City Centre



Indoor Shopping Centre on the High Street



Additional space for question 2(e) only:

.....

.....

.....

.....

.....

.....

End of Question 2



BLANK PAGE

**PLEASE DO NOT WRITE
ON THIS PAGE**

TURN OVER FOR

SECTION B: OPTIONS

Answer one question in this section.

Chose either Question 3 (Theme 3) or Question 4 (Theme 4).



SECTION B: OPTIONS

Answer one question in this section.

Chose either Question 3 (Theme 3) or Question 4 (Theme 4).

THEME 3: Tectonic Landscapes and Hazards

3. (a) Give **two** ways in which the risks associated with earthquakes may be reduced. [2]

1.

2.

(b) Explain why volcanic activity occurs at hotspots. [4]

.....

.....

.....

.....

.....

.....

.....

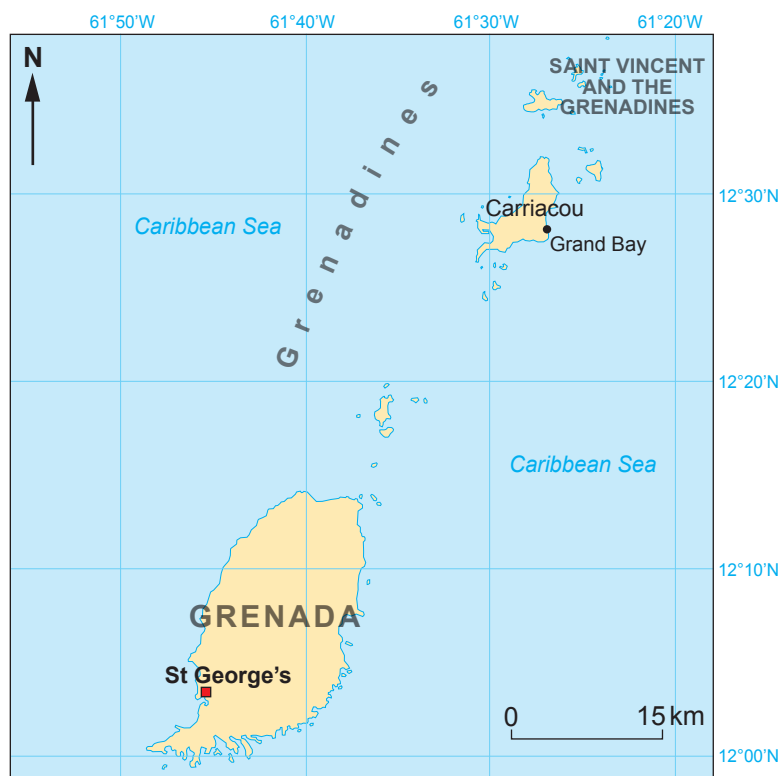
.....

.....



(c) Study **Map 3.1** below.

Map 3.1 – The Location of Grenada



- (i) Use information from the map to circle the correct answer in the sentences below. [2]

The distance from St George's (Grenada) to Grand Bay (Carriacou) is
36 / 56 / 76 kms.

The direction from St George's to Grand Bay is **north east / south west / north west**.



(ii) Study the information in the **Resource Box** below.

Resource Box – Information about Grenada and the Lesser Antilles

Grenada

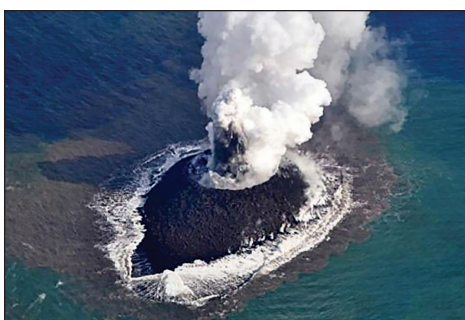
- GDP per capita US\$ 8960.
 - The economy in Grenada is reliant on tourism.
 - Grenada also exports crops such as nutmeg.
 - Japan, a HIC that is affected by tectonic activity has a GDP per capita US\$ 48600.
-
- Grenada is part of a volcanic chain of islands on the eastern side of the Caribbean Plate.
 - The volcanic arc is part of a subduction zone.
 - The arc includes 17 active volcanoes including:
 - Soufriere Hills (Montserrat)
 - Mount Pelée (Martinique)
 - Kick 'em Jenny (near Grenada)

Soufriere Hills, Montserrat

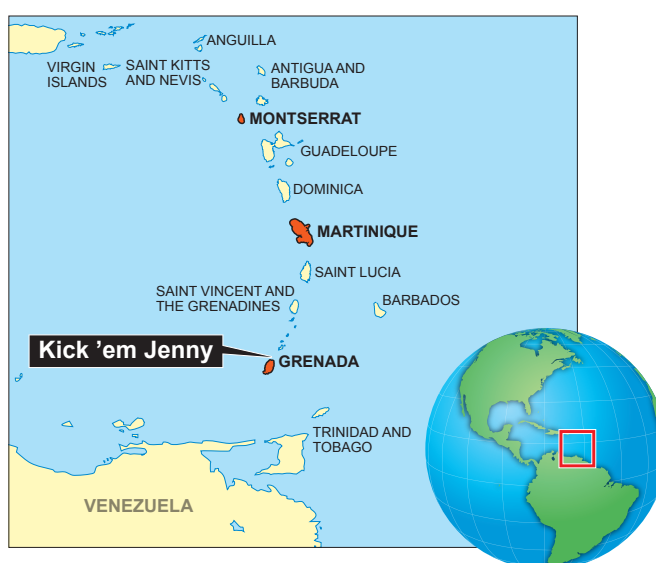
Kick 'em Jenny is an active underwater volcano, located near Grenada. It rises 1,300m above the sea floor. In March 2018, increased seismic activity led to a 5 km exclusion zone around the volcano. Bubbles of volcanic gases can lower water density and can cause ships to sink.



An underwater volcano erupting



Location of Kick 'em Jenny volcano



Additional space for question 3(c)(ii) only:

.....

.....

.....

.....

.....

.....

End of Question 3



BLANK PAGE

**PLEASE DO NOT WRITE
ON THIS PAGE**



THEME 4: Coastal Hazards and their Management

If you have answered question 3, do not answer question 4.

4. (a) Give **two** soft engineering strategies used to reduce the risk of coastal erosion and flooding. [2]

1.

2.

(b) Explain why cost-benefit analysis is used in coastal management. [4]

.....

.....

.....

.....

.....

.....

.....

.....

.....

.....



(c) Study **Map 4.1** below.

Map 4.1 – The Location of The Bahamas



- (i) Use information from the map to circle the correct answer in the sentences below. [2]

The distance from Nassau to Clarence Town is **205 / 305 / 405** kms.

The direction from Nassau to Clarence Town is **south east / north west / north east**.



(ii) Study the information in the **Resource Box** below.

Resource Box – Information about The Bahamas

The Bahamas

- The Bahamas is a Small Island State and is a member of the Caribbean Community.
- Bahamas GDP per capita US\$ 26500.
- UK GDP per capita US\$ 42500;
- The Bahamas has a population of over 400 000 people.
- Tourism accounts for 60% of the nation's wealth.

A beach resort near Nassau, Bahamas



Rising Sea Levels

- The Bahamas are highly vulnerable as 80% of the land lies less than 1 metre above sea level.
- Sea level rise could threaten food security, water supplies and the tourist industry.
- It is recommended that the Caribbean Small Island States should erect more than 200 miles of levees and sea walls, at a cost of US\$6 billion.

Sea Wall near Nassau, Bahamas



Additional space for question 4(c)(ii) only:

.....

.....

.....

.....

.....

.....

End of Question 4

END OF PAPER



BLANK PAGE

**PLEASE DO NOT WRITE
ON THIS PAGE**



BLANK PAGE

**PLEASE DO NOT WRITE
ON THIS PAGE**



BLANK PAGE

**PLEASE DO NOT WRITE
ON THIS PAGE**



Landranger series (1:50 000 scale)

LANDRANGER MAP SYMBOLS



ROADS AND PATHS Not necessarily rights of way

LAND FEATURES

RAILWAYS

ABBREVIATIONS See website for full list

Br	Bridge	MS	Milestone
Cemy	Cemetery	Mus	Museum
CG	Cattle grid	P	Post office
CH	Clubhouse	PC	Public convenience (in rural areas)
Coll	College	PH	Public house
Fm	Farm	Sta	Station
Ho	House	Sch	School
Hospl	Hospital	TH	Town Hall, Guildhall or equivalent
MP	Milepost	Univ	University

PUBLIC RIGHTS OF WAY Not shown on maps of Scotland

ARCHAEOLOGICAL AND HISTORICAL INFORMATION

OTHER PUBLIC ACCESS

HEIGHTS

ROCK FEATURES

TOURIST INFORMATION

BOUNDARIES

WATER FEATURES

