



GCE A LEVEL

A110U10-1



FRIDAY, 27 MAY 2022 – MORNING

**GEOGRAPHY – A level component 1**  
**Changing Landscapes and Changing Places**

1 hour 45 minutes

**ADDITIONAL MATERIALS**

In addition to this examination paper, you will need **one** WJEC pink 16-page answer booklet and a calculator.

**INSTRUCTIONS TO CANDIDATES**

Answer in Section A, **either** questions 1, 2 and **either** 3 or 4 (Coastal Landscapes) **or** questions 5, 6 and **either** 7 or 8 (Glaciated Landscapes).

Answer questions 9, 10 and, **either** 11 or 12 in Section B (Changing Places).

Use black ink or black ball-point pen.

Write your answers in the separate answer booklet provided.

Write your name, centre number and candidate number in the spaces at the top of the answer booklet.

**INFORMATION FOR CANDIDATES**

The number of marks is given in brackets [ ] at the end of each question or part-question; you are advised to divide your time accordingly.

**This paper requires that you make as full use as possible of appropriate examples and reference to data to support your answers. Sketch maps and diagrams should be included where relevant.**

**Section A: Changing Landscapes**

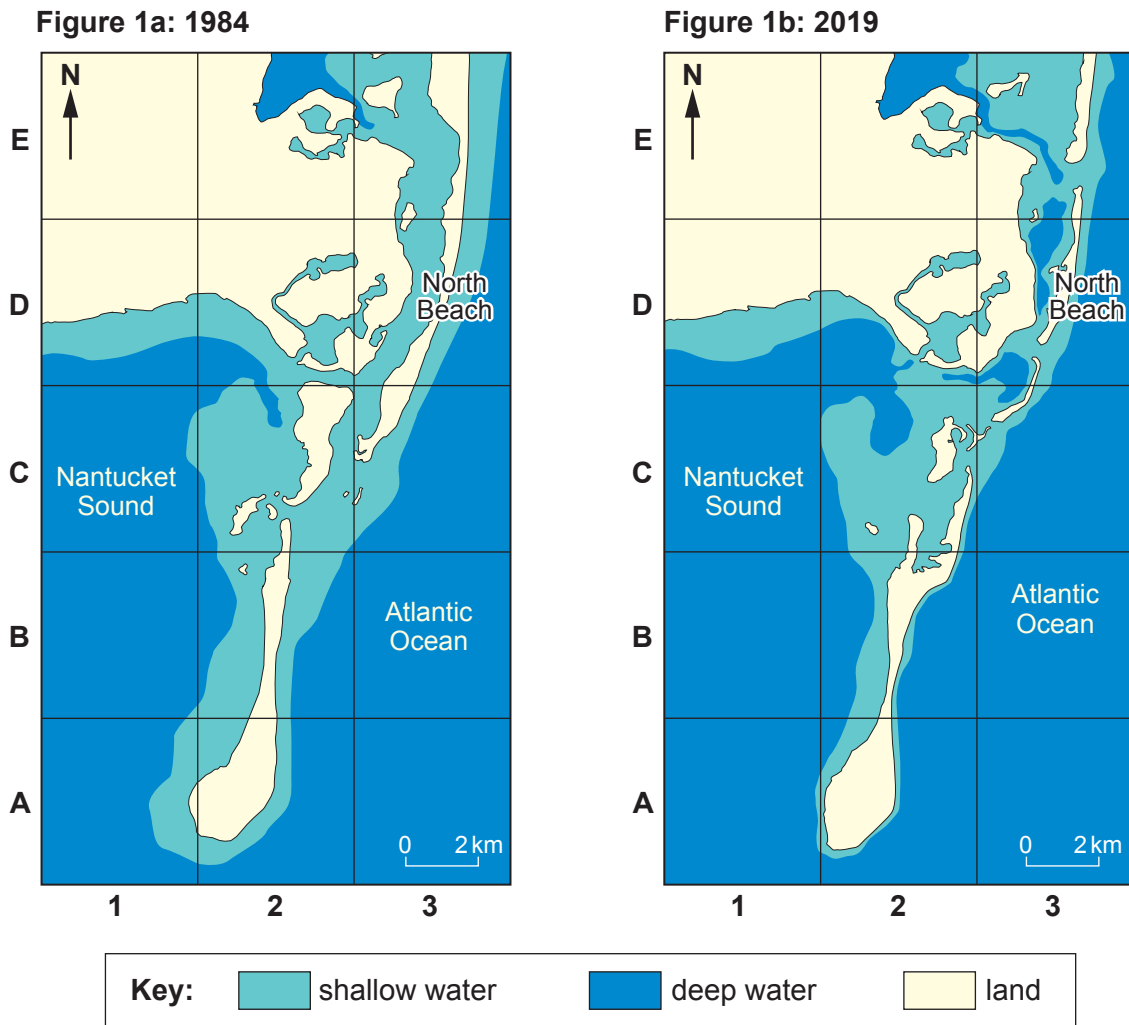
Answer **either** questions 1 **and** 2 and **either** 3 **or** 4 **or** questions 5 **and** 6 and **either** 7 **or** 8 from your chosen landscape.

Make the fullest possible use of examples in support of your answers.

**Coastal Landscapes**

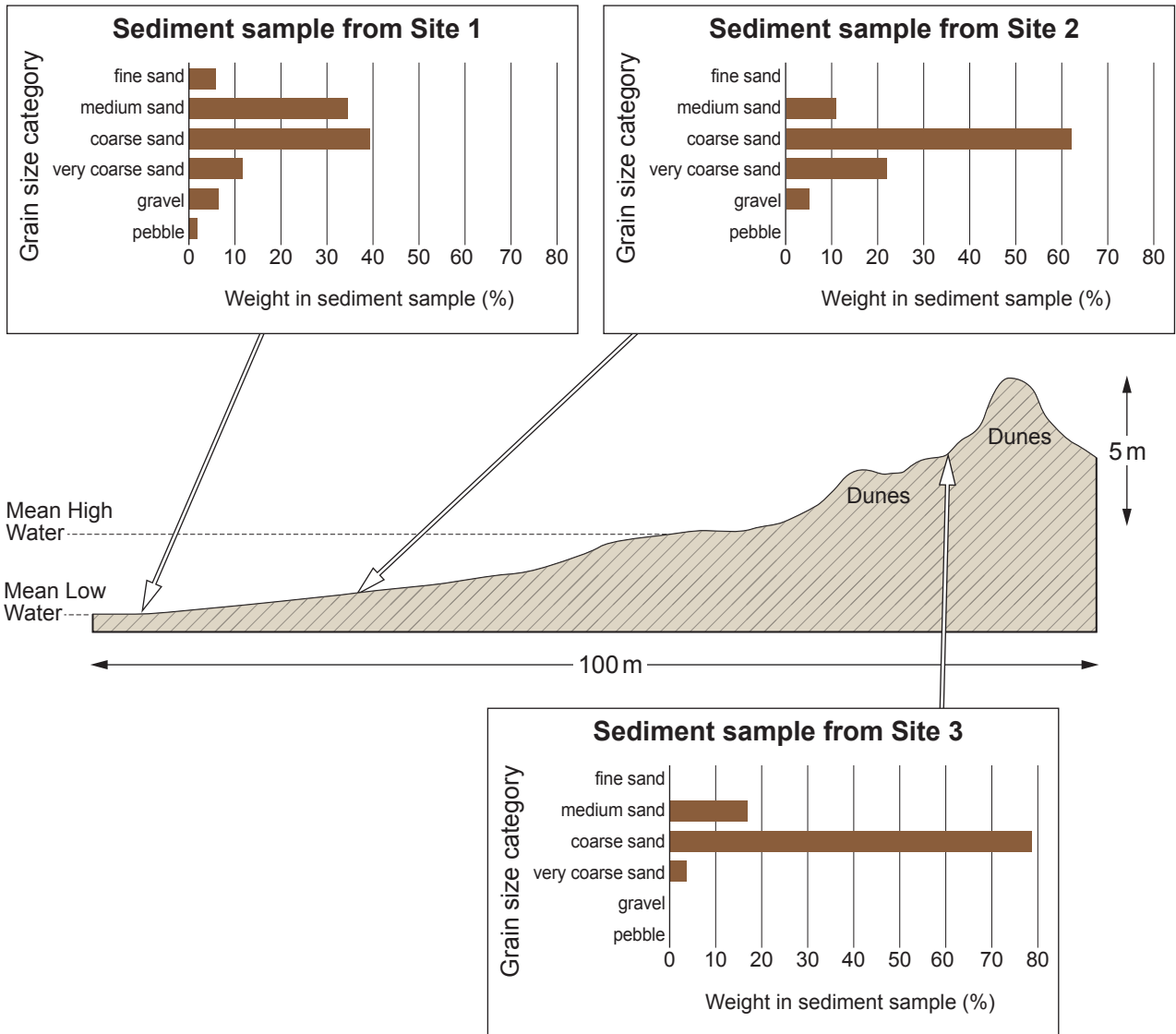
Answer questions 1 **and** 2 and **either** 3 **or** 4 if this is your chosen landscape.

**Figure 1: Changes to the coastal environment at Cape Cod, Massachusetts, USA, 1984–2019**



1. (a) Use **Figure 1** to describe changes in the coastal environment shown. [5]
- (b) Outline **two** economic impacts of coastal processes on human activity. [8]

**Figure 2: Grain size distributions on a transect across a beach and coastal dune sequence in Great Exhibition Bay, New Zealand**



2. (a) (i) Use **Figure 2** to analyse variations in grain size along the transect. [5]
- (ii) Suggest how marine and aeolian processes may have influenced the variations in grain size shown in **Figure 2**. [8]

**Either,**

3. Examine the relative importance of marine erosional processes to the characteristics and formation of **one or more** landforms of coastal erosion. [15]

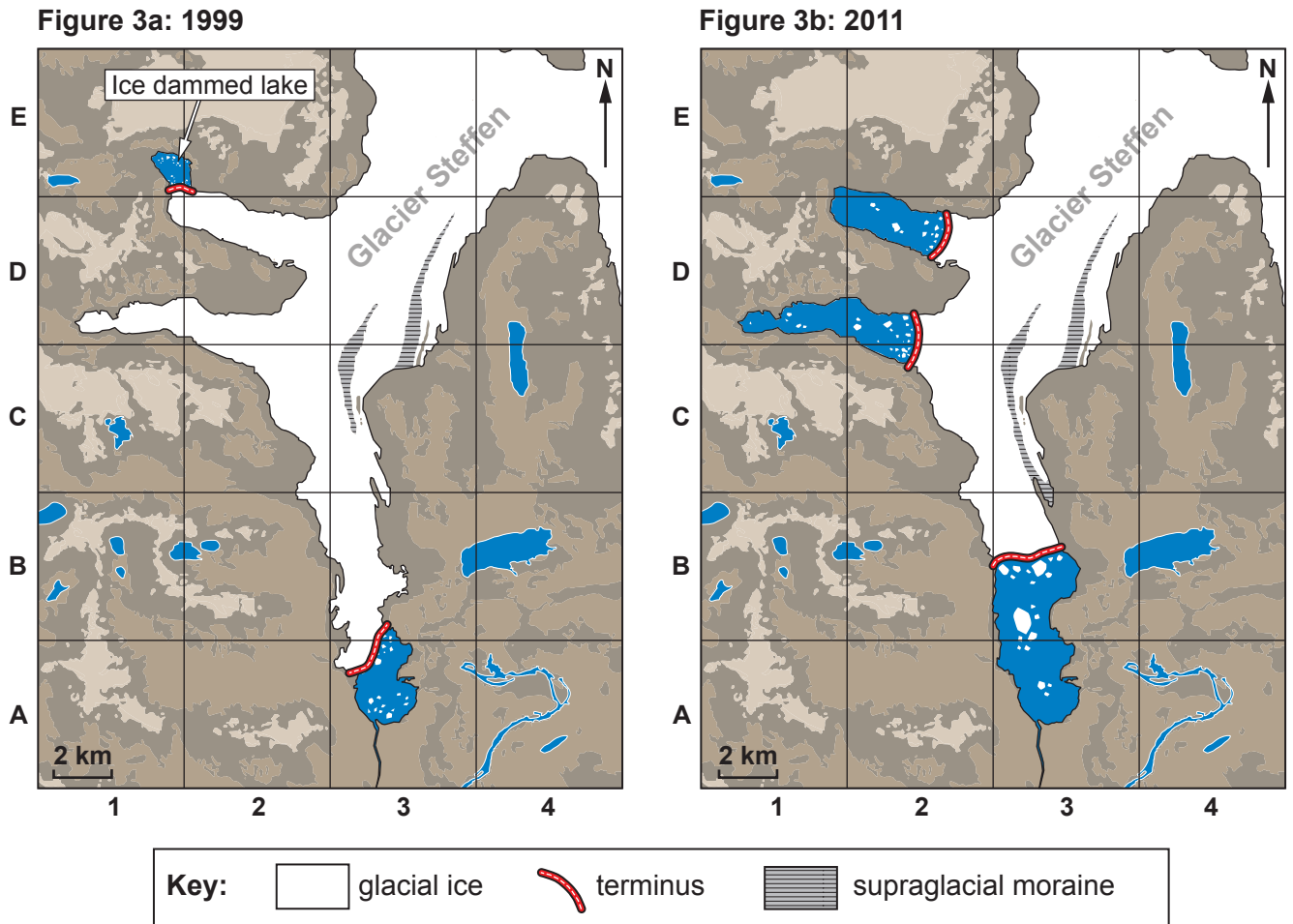
**Or,**

4. Assess the success of **one** strategy used to manage the interaction between human activity and coastal processes and/or landscapes. [15]

## Glaciated Landscapes

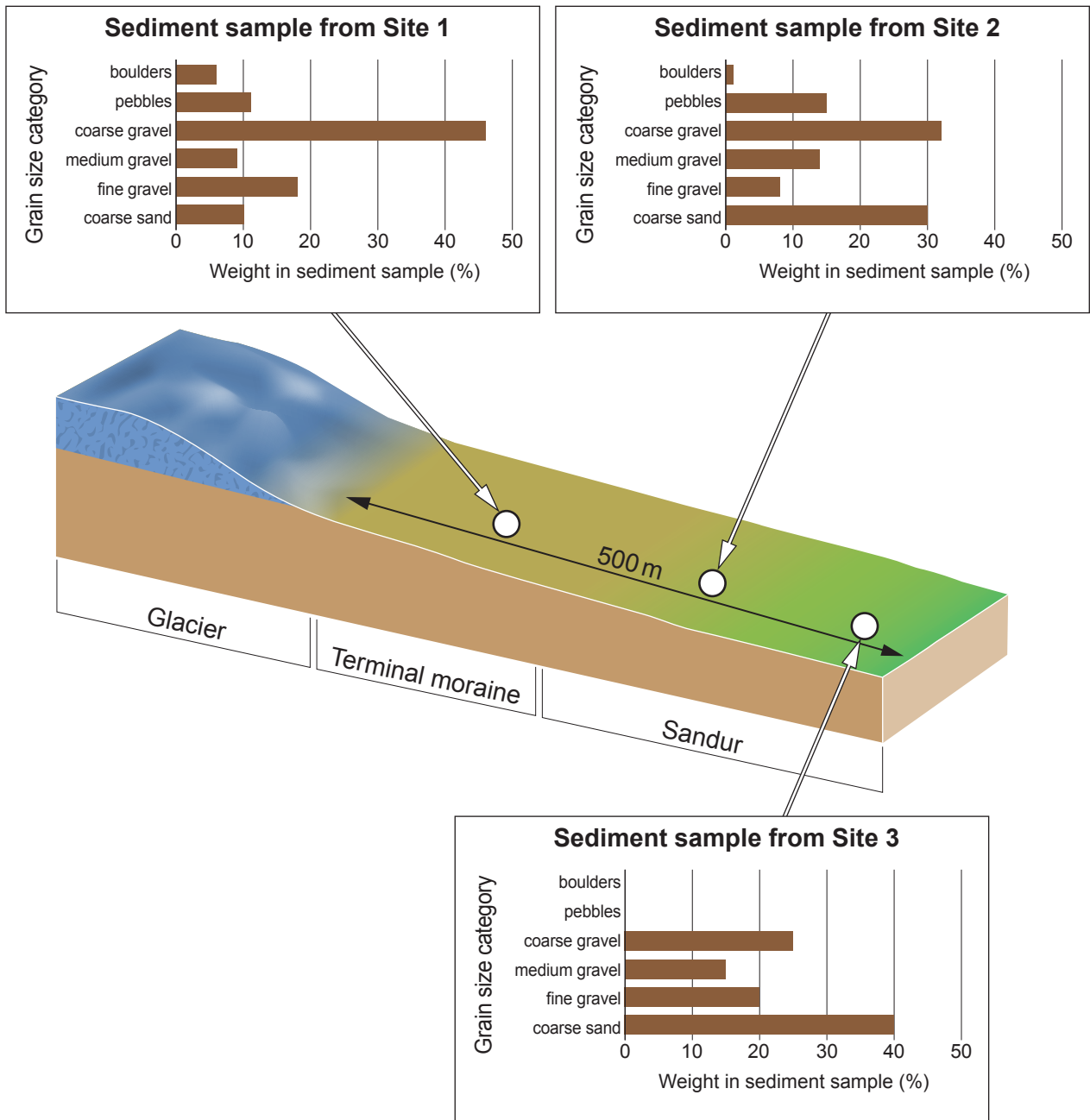
Answer questions 5 and 6 and either 7 or 8 if this is your chosen landscape.

**Figure 3: Changes to the glacial environment, Glacier Steffen, Chile, 1999–2011**



5. (a) Use **Figure 3** to describe changes in the glacial environment shown. [5]
- (b) Outline the impact of **two** glacial processes on human activity. [8]

**Figure 4: Grain size distributions on a transect across a terminal moraine and sandur (outwash plain), Longyearbyen, Svalbard, Norway.**





6. (a) (i) Use **Figure 4** to analyse variations in grain size along the transect. [5]
- (ii) Suggest how glacial and fluvioglacial processes may have influenced the variations in grain size shown in **Figure 4**. [8]

**Either,**

7. Examine the relative importance of glacial weathering to the characteristics and formation of **one or more** landforms of glacial erosion. [15]

**Or,**

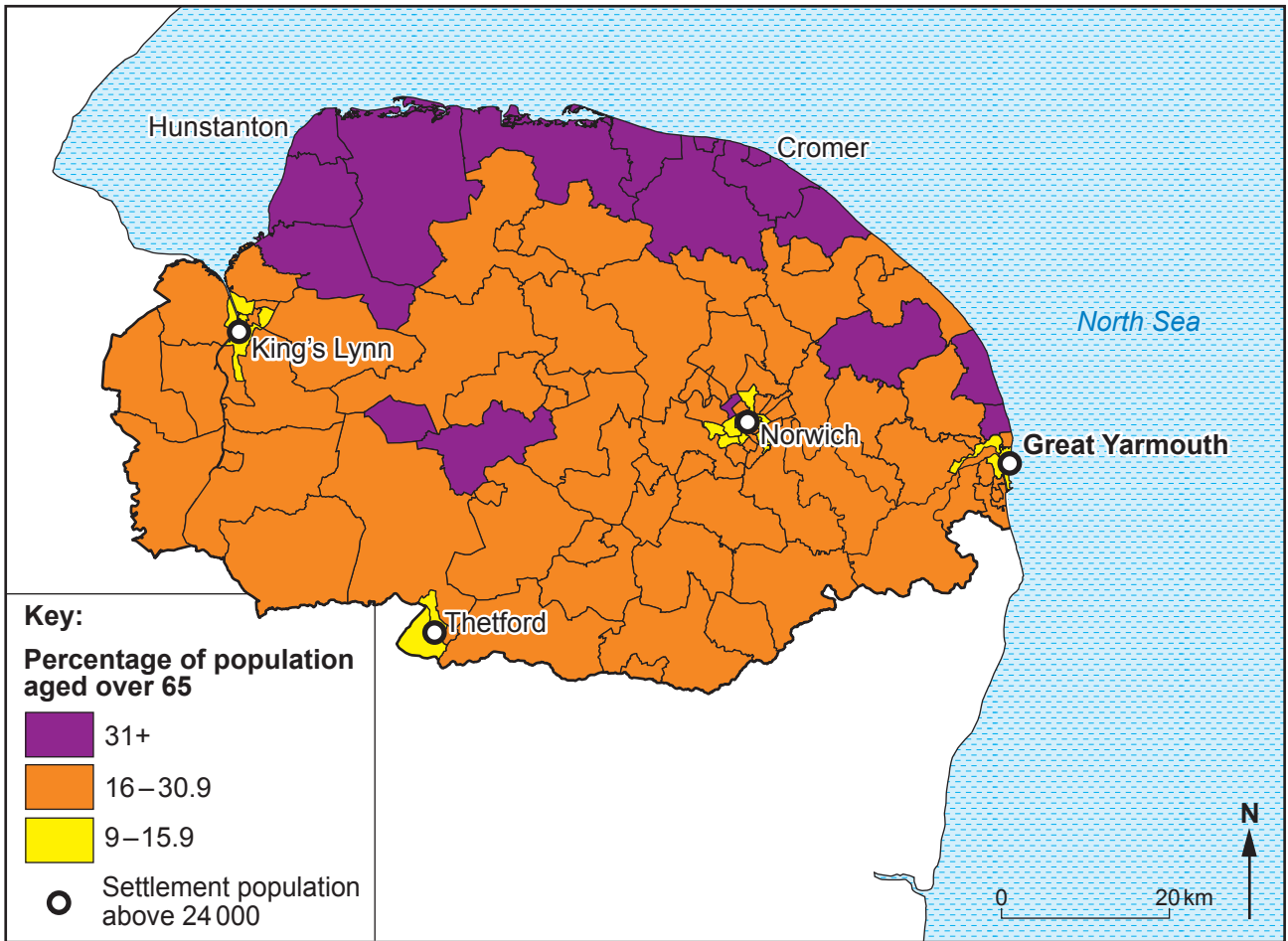
8. Assess the success of **one** strategy used to manage the interaction between human activity and glacial processes and/or landscapes. [15]

**Section B: Changing Places**

Answer questions 9 and 10 and either 11 or 12.

Make the fullest possible use of examples in support of your answers.

**Figure 5: Distribution of population aged over 65 in Norfolk, 2018**



9. (a) Use **Figure 5** to describe the distribution of population aged over 65 in Norfolk. [5]
- (b) Suggest why the age characteristics of a population vary from place to place. [8]

**Figure 6: Employment by sector, 2019**

<b>Sector</b>	<b>Older industrial towns e.g. Bolton, Barnsley (%)</b>	<b>London (%)</b>	<b>GB (England, Wales and Scotland) (%)</b>
Manufacturing, energy and water	15	4	11
Construction	7	7	7
Retail, distribution, hospitality	20	14	18
Transport and communications	8	13	9
Banking, finance and business services	13	29	18
Education, health and public administration	32	26	31
Other services e.g. creative	5	7	6

10. (a) Use **Figure 6** to analyse variations in employment structure. [5]
- (b) Outline **two** different ways in which urban places can be re-imaged. [8]

**Either,**

11. Assess the impacts of quaternary industry clusters on people and places. [15]

**Or,**

12. Assess the importance of recreation in the rebranding of rural places. [15]

**END OF PAPER**

**BLANK PAGE**

**BLANK PAGE**