

Surname	Centre Number	Candidate Number
First name(s)		0



GCSE

C112U20-1



TUESDAY, 7 JUNE 2022 – AFTERNOON

GEOGRAPHY B – Component 2

Problem Solving Geography

1 hour 30 minutes

For Examiner's use only		
	Maximum Mark	Mark Awarded
Part A	44	
Part B	16	
Part C	12	
SPaG	4	
Total	76	

ADDITIONAL MATERIALS

Resource Folder.

In addition to this paper you may use a calculator and a ruler if required.

INSTRUCTIONS TO CANDIDATES

Answer **all** of the questions in this examination.

Use black ink or black ball-point pen. Do not use gel pen or correction fluid.

You may use a pencil for graphs and diagrams only.

Write your name, centre number and candidate number in the spaces at the top of this page.

Write your answers in the spaces provided in this booklet. Additional space is provided for some questions within the booklet (if required). If further space is required for any question, you should use the additional page(s) at the end of this booklet. The question number(s) should be clearly shown.

INFORMATION FOR CANDIDATES

The number of marks is given in brackets [] at the end of each question or part-question.

You are reminded that assessment will take into account your ability to spell, punctuate and use grammar and specialist terminology accurately in your answer to Part C.



JUN22C112U20101

BLANK PAGE

**PLEASE DO NOT WRITE
ON THIS PAGE**



Answer **all** questions.

Grottole is a village in Italy, a High Income Country (HIC). In recent years it has experienced an outward flow of people. This has been caused by a number of reasons.

Part A: provides information about Grottole, its climate and some causes of migration from the village. 44 marks

Part B: provides some information about the effects of outward migration and considers some solutions to help the area. 16 marks

Part C: asks you to suggest which solutions should be chosen to help the area. 16 marks

Part A – An introduction to Grottole, Italy.

You are advised to spend about **40 minutes** on this part.

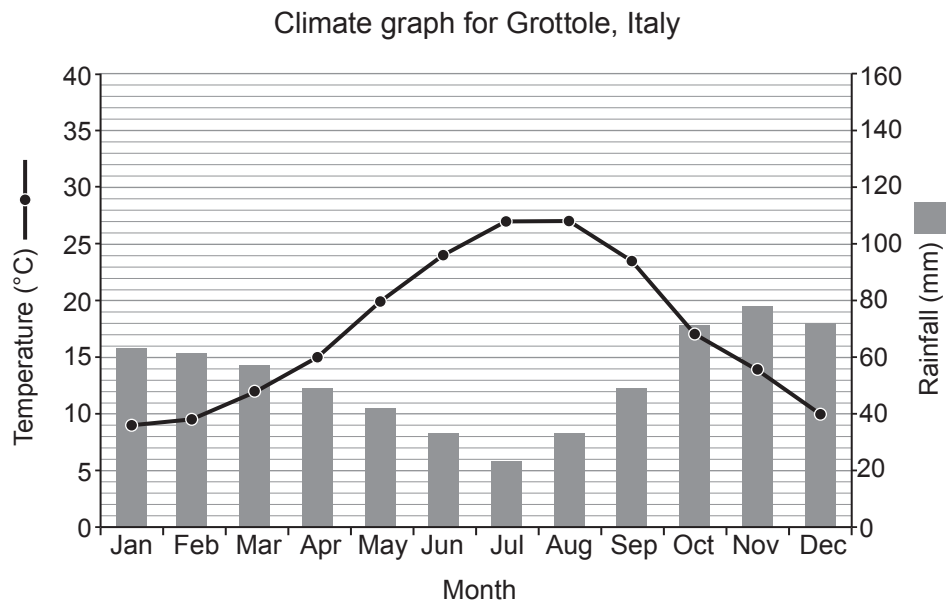
- (a) Study the map in **Figure 2** on **page 2** of the **Resource Folder**.

Describe the location of Grottole by circling the **three** correct answers from the box below. [3]

Southern Italy	Northern Italy	West of Naples	On the Adriatic coast
East of Naples	On the island of Sicily	North of Croatia	
On the coast of the Ionian Sea	350 km from Rome	200 km from Rome	



- (b) (i) Study the climate graph below.



Describe the climate of Grottolo. Use figures in your answer.

[3]

- (ii) Complete the table below to describe the typical conditions of a high-pressure system by circling the **one** correct term in each box.

[4]

	Summer	Winter
Cloud cover	None / Some / Full	None / Some / Full
Weather conditions	Rain / Windy / Sun	Frost / Windy / Rain



- (iii) Summer tourism in Grottole is encouraged by weather caused by high-pressure conditions.

Complete the following statements to explain why high pressure encourages summer tourism. Circle the correct term in each set of possible answers. [4]

In areas of high pressure the air in the upper atmosphere (**cools** / **freezes** / **warms**). This means that the air (**rises** / **sinks** / **does not move**). As a result, there is less (**condensation** / **evaporation** / **transpiration**).

The air in high-pressure areas moves slowly so the weather is (**unsettled** / **settled** / **maritime**).

- (c) Global warming is causing climate change in many places in Italy, including Grottole.

- (i) Name **two** causes of global warming. [2]

Cause 1:

.....

Cause 2:

.....

- (ii) Give **four** effects of climate change. [4]

Effect 1:

Effect 2:

Effect 3:

Effect 4:



(iii) Explain the consequences of climate change for **one** of these groups of people.

[4]

- Farmers
- Wildlife Conservationists
- Water companies
- Tourist hotel owners

Chosen group

.....

.....

.....

.....

.....

.....

.....

.....

(d) (i) Name **one social** indicator, other than the Human Development Index (HDI), that is used to measure human development. [1]

.....

(ii) Study **Figure 3** on **page 3** of the **Resource Folder**.

Many of the people employed in the primary industry in Grottole are farmers. They export a lot of their products.

What does export mean?

[1]

.....

.....



- (iii) Study the development indicators in **Figure 4** on **page 3** of the **Resource Folder**. Compare Grottole's region with Italy as a whole. [3]

.....

.....

.....

.....

.....

.....

- (iv) Suggest what these indicators do **not** tell us about the level of development in Grottole? [3]

.....

.....

.....

.....

.....

.....



-
-
- (iii) The population of Grottole has fallen from 1 400 to 300 in the past thirty years.

Give **two** reasons why a decrease in population in a rural area affects those who stay. [4]

.....

.....

.....

.....

.....

.....

.....

.....

End of Part A



Part B – The effects of migration in Grottole.

You are advised to spend about **20 minutes** on this part.

- (a) (i) Study the data table below.

	Households with internet access [2019]	Households with potential access to ultra-fast broadband [2019]
Grottole's region	69%	94%
Northern Italy	74%	98%
Central Italy	73%	82%
Southern Italy	64%	80%
Italy	71%	94%
UK	95%	95%

Give the difference between households with internet access in Grottole's region and the UK. [1]

..... %

- (ii) Give **one** reason why good communication links can bring economic advantages to an area. [2]

.....

.....

.....

.....



- (b) Study **Figure 5** on **page 4** of the **Resource Folder**. Grottole has become a tourist honeypot. The number of holiday homes in the village has increased in recent years.

- (i) Explain the possible problems this could cause. [6]

.....

.....

.....

.....

.....

.....

.....

.....

.....

.....

.....

.....

.....

.....

- (ii) Suggest **one** advantage that an increase in tourism could bring to the village of Grottole. [3]

.....

.....

.....

.....

.....

.....



- (c) (i) Multinational companies [MNCs] have invested in Grottole because it is part of a trading bloc, the European Union (EU).

Give **one** reason why governments benefit from investment by MNCs. [2]

.....

.....

.....

.....

- (ii) Governments sometimes offer industries help to move to an area. Explain **one** problem this might cause. [2]

.....

.....

.....

.....

End of Part B



You are advised to spend about **30 minutes** on this part.

A number of options have been suggested to try to stop this population change and produce a more sustainable community.

These are shown in Figure 6 on page 5 of the Resource Folder.

Select a combination of the options that you think will work best together to:

- stop people leaving
- encourage people to move into the area
- produce a more sustainable community

Use information in this paper and the Resource Folder, as well as your studies, to help you.

Choose no more than three.

Justify your choices.

[12]

Your ability to spell, punctuate and use grammar and specialist terminology accurately will be assessed in your answer. [4]

[4]

Circle the development options you have chosen.

1 2 3 4 5 6 7 8





END OF PAPER



Examiner
only



TUESDAY, 7 JUNE 2022 – AFTERNOON**GEOGRAPHY B – Component 2****RESOURCE FOLDER**

This folder is for use with questions in Component 2.
This folder need not be handed in with your answer booklet.



Grottole, Italy. A hilltop village.

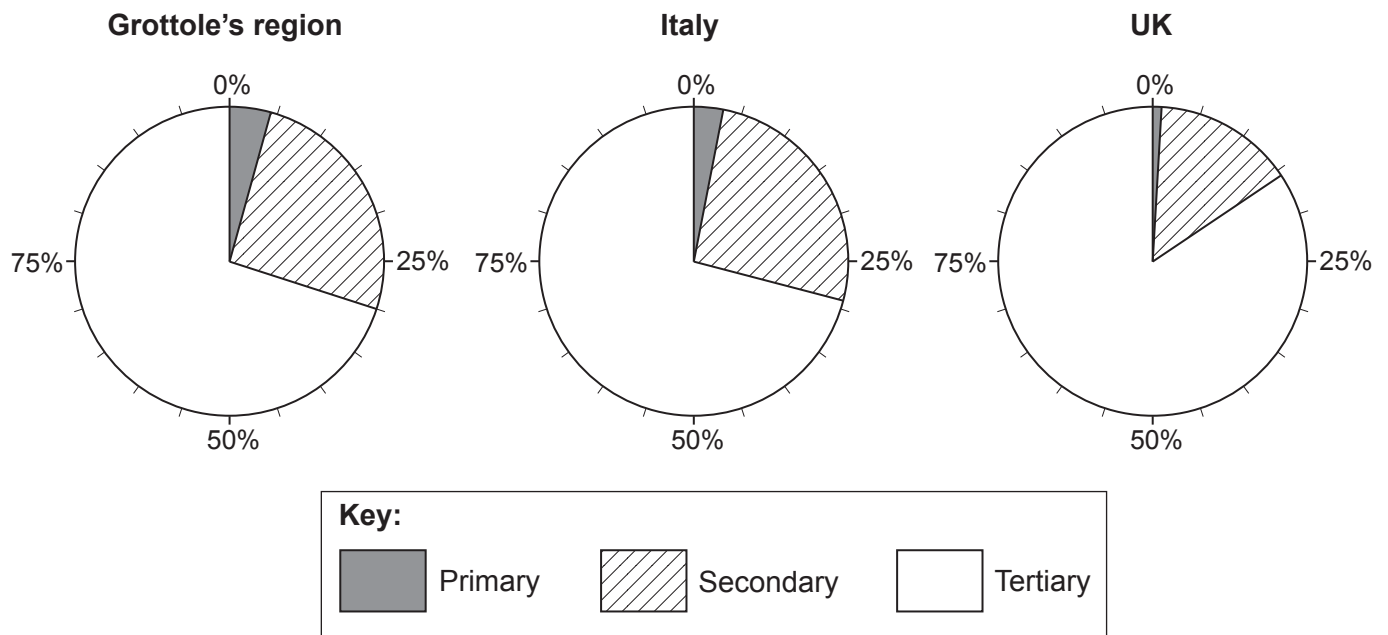
Figure 1 – Images of Grottole.



Figure 2 – A map of the the location of Grottole, Italy.



Figure 3 – Comparison of Jobs/Employment Structure between Grottole, Italy and UK.



C112U201A
03

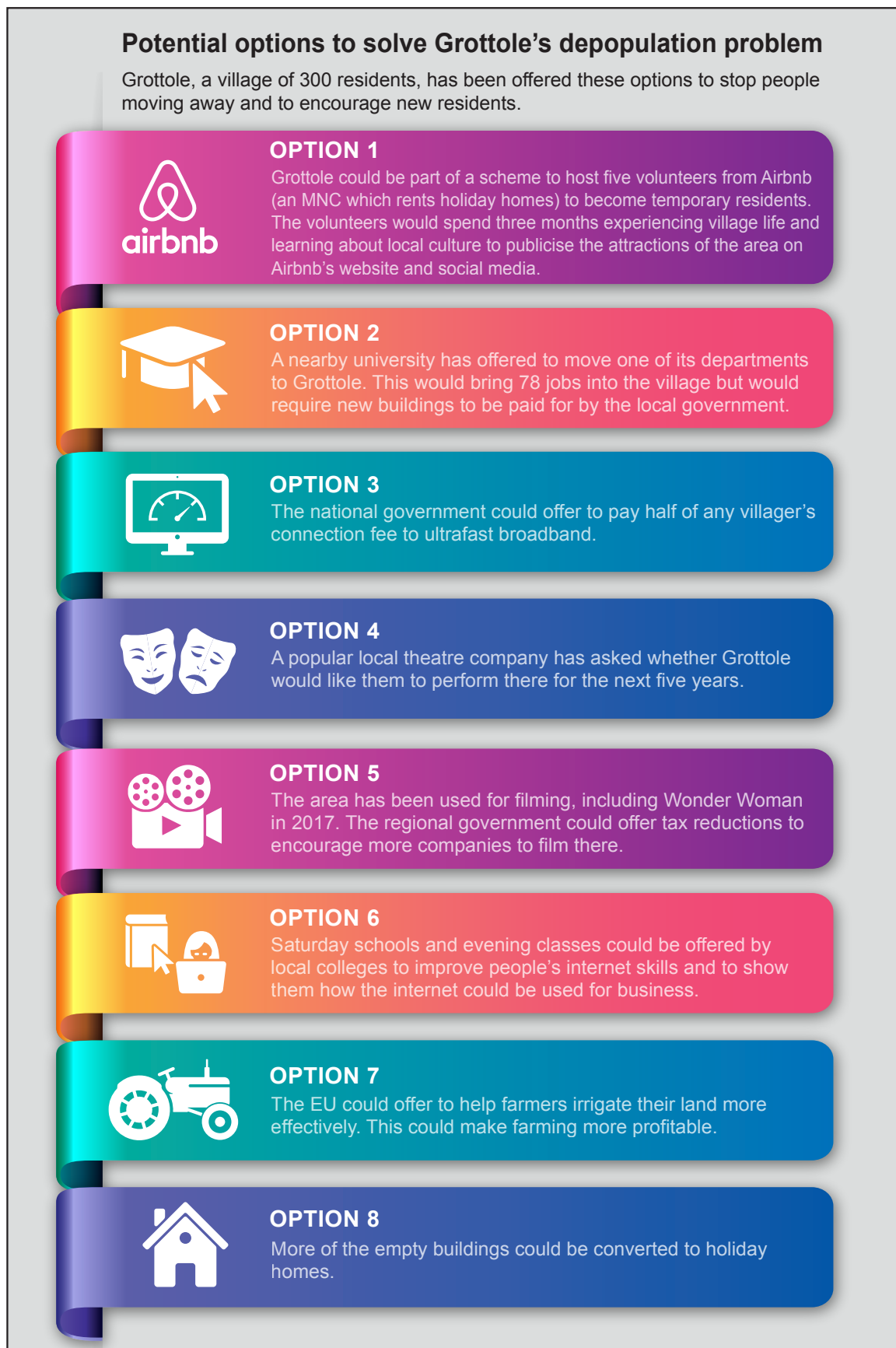
Figure 4 – Some development indicators comparing Grottole's region, Italy and UK (2018).

	Grottole's region	Italy	UK
HDI	0.853	0.883	0.920
GNI per capita (US\$)	\$25 621	\$33 840	\$41 730
Unemployment	12.5%	9.1%	4.1%

Figure 5 – Some of the houses in Grottole are being rented out as holiday homes.



Figure 6



BLANK PAGE

BLANK PAGE